

LUZERNE COUNTY COMMUNITY COLLEGE BOARD OF TRUSTEES

Virtual Board Meeting - Tuesday, February 22, 2022

Time: 5 p.m.-Executive Session (closed)

5:30 p.m. Work Session 6 p.m. Board Meeting

Zoom Link:

<https://us06web.zoom.us/j/93003918834?pwd=b0gwaVFWSUQxakMvM09HVVB5NEhWQT09>

Meeting ID: 930 0391 8834 Passcode: 888095 Dial Option: +1 646 558 8656

AGENDA

BUSINESS SESSION

Pledge of Allegiance

1. Roll Call
2. Public Comments Daniel C. Rodgers, Board Chair
3. Approval of December 21, 2021 Board Minutes Daniel C. Rodgers, Board Chair
4. Approval of February 22, 2022 Board Agenda Daniel C. Rodgers, Board Chair
5. Report of Officers and Agents
 - o President's Report Thomas P. Leary, President
 - o Treasurer's Report Cheryl Baur, Vice President, Finance
 - o Foundation Report Rebecca Brominski, Executive Director, Institutional Advancement

ACTION ITEMS

6. Executive Committee Daniel C. Rodgers, Board Chair
 - A. Recommend Approval of Strategic Plan 2022-2026, Revised Mission Statement and Institutional Values
7. Student Success and Workforce Development Committee Bernard W. Graham, Ph.D., Committee Chair
 - A. Ratification , Spring 2022 Academic Calendar
8. Audit, Finance and Facilities Committee Susan E. Unvarsky, Committee Chair
 - A. Bid #503, Waste Removal
 - B. Bid #504, Air Flow Units
 - C. Bid #505, Wireless Upgrade Project
 - D. Board Resolution – PDE Capital Application Projects
9. Compliance, Legal Affairs, Policies, Human Resources Diversity and Inclusion Committee August Piazza, Committee Chair
10. Government and External Affairs, Public Relations and Marketing, and College Foundation Committee Catherine O'Donnell, Esq., Committee Chair

INFORMATIONAL ITEMS

1. Unfinished Business of Previous Meeting Daniel C. Rodgers, Board Chair
2. Communications Daniel C. Rodgers, Board Chair
3. Adjournment Daniel C. Rodgers, Board Chair

6. Executive Committee Action Item

6A. Recommendation to Approve Strategic Plan 2022-2026, Revised Mission Statement and Institutional Values

Recommend Luzerne County Community College Board of Trustees approve the Strategic Plan 2022-2026, revised Mission Statement and Institutional Values (Attachment 6A)

Proposed Mission Statement:

Luzerne County Community College is a student-centered institution prioritizing support and access to an inclusive, equitable learning environment that fosters academic and personal success and strengthens communities in the Northeast Pennsylvania region.

7. Student Success and Workforce Development Committee Action Item

7A. Ratification of Revised Spring 2022 Academic Calendar

Recommend Luzerne County Community College Board of Trustees ratify and reaffirm approval of the revised Spring 2022 Academic Calendar. (Attachment 7A)

8. Audit, Finance and Facilities Committee Action Items

8A Recommendation to approve Bid # 503, Waste Removal

Recommend Luzerne County Community College Board of Trustees approve the award of Bid #503, for Waste Removal to Waste Reduction and Recycling in the amount of \$23,880.00 per year. This is a three (3) year contract to provide waste removal services for the Main Campus, the Joseph A. Paglianite Culinary Institute and the Francis S. and Marie Gill Carrozza, R.N., Health Science Center in Nanticoke.

8B. Recommendation to Approve Bid # 504, Air Flow Units

Recommend Luzerne County Community College Board of Trustees approve the award of Bid #504 in the amount of 28,593.60 to Hu-Friedy Mfg. Co. Inc.

8C. Recommendation to Approve Bid # 505, Wireless Upgrade Project

Recommend the Luzerne County Community College Board of Trustees approve the award of Bid #505, Wireless Update Project to the lowest responsible bidders for the specified Aruba equipment.

Section A - IntegraONE for wireless access points in the amount of \$61,951.65 (Aruba);

Section B - IntegraONE for Software & Services in the amount of \$19,776.10 (Aruba);

Section C - IntegraONE for Miscellaneous equipment in the amount of \$1,460.85.

The total amount for sections A through C is **\$83,188.60**.

Luzerne County Community College's wireless infrastructure upgrade will be funded under the GEER II grant.

8D. Recommendation to Approve Board Resolution - PDE Capital Application Projects

Recommend the Luzerne County Community College ("LCCC") Board of Trustees approve the capital projects to be submitted in March 2022 via the Pennsylvania Department of Education ("PDE") capital application process. Additionally, Luzerne County Community College Board of

Trustees approve the authorization of matching funds for any capital project submitted via the PDE capital application process and approved for funding by PDE for FY2022-2023.

The capital projects approved to be submitted to PDE in the March 2022 capital application process and the estimated costs are: Building 1 Switchgear Replacement - \$200,018 Water Infiltration Remediation - \$100,000 Main Parking Lot Paving and Replacement of Sidewalk and Curbing - \$1,600,000.

Final Board of Trustee approval of the project(s) will be submitted with exact funding amounts when approved for funding by PDE. All College policies and procedures will be followed.

INFORMATION ON RECENT APPOINTMENTS

New Hires since December 21, 2021

Administration

William Kuchta, PT Assistant Chef, \$22.96/hr, January 3, 2022

Glenn Robbins, FT Director of Infrastructure/Network Operations \$70,783.78/yr, January 3, 2022

Caitlin LaRue, FT Human Resources Generalist, \$55,298.55/yr, January 10, 2022

Melissa Day, FT Director of Berwick & Greater Susquehanna Extension Centers, \$59,843.81/yr, January 24, 2022

Sarah Falcone, PT KEYS Student Facilitator, \$24.49/hr, February 7, 2022

Faculty

Russell Bigus, FT Temporary Instructor of Biology, Spring 2022 Semester, \$50,330.31/yr, January 26, 2022

Devon Buckley, FT Assistant Professor of Nursing, \$40,089.00/yr, January 26, 2022

Maria Carr, FT Temporary Instructor of Medical Assisting, Spring Semester 2022, \$36,739.00/yr, January 26, 2022

David Hontz, FT Assistant Professor of Physics and Chemistry, \$40,089.00/yr, January 26, 2022

Mary Murphy, FT Temporary Instructor of Human Services/Sociology, Spring Semester 2022, \$36,739.00/yr, January 26, 2022

LEAVE REPORT STATUS

Separations from Employment

Russel Bigus, FT Temporary Instructor of Biology, Fall 2021 Semester, December 20, 2021

Anna Buck, FT Temporary English as a Second Language (ESL) Instructor, December 20, 2021

Devon Buckley, FT Temporary Instructor of Nursing, Fall 2021 Semester, December 20, 2021

Maria Carr, FT Temporary Instructor of Biology, Fall 2021 Semester, December 20, 2021

David Hontz, FT Temporary Instructor of Biology and Chemistry, Fall 2021 Semester, December 20, 2021

Mary Murphy, FT Temporary Instructor of Human Services and Sociology, Fall 2021 Semester, December 20, 2021

Lora Roebuck, FT Temporary Instructor of Mathematics, Fall 2021 Semester, December 20, 2021

Amanda Stutzman, PT Extension Center Administrator, Berwick Extension Center, January 14, 2022

William Kashatus, FT Faculty, History/Social Science, January 21, 2022

Sabrina Richards, FT Temporary Extension Center Administrator, Berwick Extension Center, January 28, 2022

Karen Dessoeye, FT Faculty, Computer Information Systems, February 25, 2022

Name: Luzerne County Community College Board of Trustees Board Meeting

Date: Tuesday, December 21, 2021

Time: 6:00 PM

Location: Luzerne County Community College, Educational Conference Center, Nanticoke PA and Zoom Link

AGENDA ITEM	NOTES	ACTION TAKEN/FOLLOW UP ACTION NEEDED
Pledge of Allegiance	Daniel Rodgers, Board Chair, asked attendees to rise for the Pledge of Allegiance.	
1. Roll Call	<p>Present: Joan M. Blewitt, Ph.D.; Lynn M. Distasio; Holly A. Evanski, Secretary; Bernard W. Graham, Ph.D.; Paul Halesey; Erin K. Keating, Ed.D.; Joseph Lettiere; Catherine R. O'Donnell, Esq., Vice Chair; August Piazza; Daniel C. Rodgers, Board Chair; Susan E. Unvarsky; Kevin Walsh, Esq., College Solicitor.</p> <p>Excused: George Brown, James Dennis, Anthony Seiwel, David James Usavage.</p>	
2. Approval of October 26, 2021, Board Minutes	<p><i>Daniel Rodgers, Board Chair, reported prior to the start of the December 21, 2021, Board meeting an Executive Session was held to discuss personnel and litigation issues.</i></p> <p>2. Daniel Rodgers, Board Chair, recommended approval of the October 26, 2021 Board meeting minutes.</p>	<p>2. Approved. Motion made by Susan E. Unvarsky; seconded by Joan M. Blewitt, Ph.D.</p> <p>Vote was all "yes". Motion carried.</p>
3. Approval of December 21, 2021, Board Agenda	<p>3. Daniel Rodgers, Board Chair, recommended approval of the December 21, 2021 Board agenda.</p>	<p>3. Approved. Motion made by Holly Evanski, Board Secretary; seconded by Joseph Lettiere.</p> <p>Vote was all "yes". Motion carried.</p>

AGENDA ITEM	NOTES	ACTION TAKEN/FOLLOW UP ACTION NEEDED
<p>4. Report of Officers and Agents</p> <ul style="list-style-type: none"> ❖ President's Report <ul style="list-style-type: none"> - Signing of Dual Admission Agreement Between LCCC & Misericordia University 	<p>President Leary began his report by welcoming Misericordia University's President, Dr. Daniel J. Myers. President Leary stated Misericordia University and Luzerne County Community College have always had a strong partnership which has enabled thousands of our students over the years to have an opportunity to receive a Bachelor's Degree at an outstanding university. That partnership has included a number of articulation agreements in our academic programs. When President Leary first met with Misericordia University's new President, Dr. Myers explained how passionate he was about community colleges and the idea that all students who graduate from community college should have the opportunity, both through accessibility and affordability, to complete their Bachelor's Degree. As a result of Dr. Myers commitment to Luzerne County Community College students, that opportunity means we will be able to enhance our partnership with additional measures to provide the opportunity and affordability to our students.</p> <p>Dr. Daniel J. Myers, President, Misericordia University stated it was his pleasure to attend tonight's Board meeting. After his appointment in July, he had the opportunity to meet with Rosana Reyes, Vice President of Enrollment Management and Student Affairs, and President Leary. They had an immediate connection - the shared passion for improving student's lives through access to higher education was just so apparent that he knew, through a partnership, we could do even more. Dr. Myers stated the partnership allows students to transfer to Misericordia without losing any time or losing any credits; and guarantee they will complete their education in four semesters. In addition, students that come to Misericordia from LCCC, Misericordia will extend their financial commitment to our students receiving financial assistance in order to complete their degree. Dr. Myers thanked everyone who worked to develop the partnership at both Luzerne County</p>	<p>N/A</p>

Community College and Misericordia University.

President Leary reported the LCCC Early College Program provides the opportunity for students to earn college credit while still in high school as well as a chance to explore several college majors and potential careers. The Early College Program also assists with College readiness and improves academic success. Funding is available through donations to the EITC (Educational Improvement Tax Credit) Program which is designed to enhance educational programs and opportunities for the region's students. Funding can be used toward the cost of tuition and books. . This year, the LCCC Foundation, Inc. received \$341,000 in EITC contributions. High school students are eligible to enroll in college classes at LCCC for the Spring 2022 and Summer 2022 semesters. Students can use these funds to offset the cost of tuition and books.

President Leary stated, it was his pleasure to report that this year's 2021 Nursing NCLEX pass rate for first-time testers was 95.12%. The national pass rate for first-time testers at the Associate level was 80.45%.

President Leary extended his congratulations to Dr. Cheryl Lesser, Vice President of Academic Affairs, who accepted the position as President of Great Bay Community College in New Hampshire. Dr. Lesser will assume her new responsibility in several months. At this time President Leary expressed his deep appreciation to Dr. Lesser for her exceptional leadership and the significant accomplishments achieved in the academic realm over the past several years. President Leary congratulated Dr. Cheryl Lesser in this wonderful career opportunity.

Dr. Cheryl Lesser thanked everyone in attendance for the opportunity to have been able to work across the institution. Dr. Lesser noted this would be her last Board meeting, stating that it has been an amazing four years but looks forward to returning to the sea coast and back to her New England roots.

Audit Report

The Audit Report was presented by Shawn Strauss, C.P.A., Maher Duesel. The College received an unmodified opinion which is a clean opinion. The total assets of the College are \$96 million which is similar to prior year, total liabilities are \$66 million, compared to \$59 in prior year, total net income is a loss of \$4 million; compared to income of \$1.4 million in prior year.

HERFF Funding which is the federal response to the coronavirus.

Three rounds of funding were received:

CARES ACT - LCCC awarded \$3.2 million

CRRSA - LCCC awarded \$6.8 million

ARPA - LCCC awarded \$11.8 million

Total \$22 million. The college spent approximately \$7 million; with \$14 million to be expended over 2022-2023.

Treasurer's Report

President Leary stated the presentation of the Audit Report replaced the Treasurer's Report.

Foundation Report

Rebecca Brominski, Executive Director, Institutional Advancement and Foundation, Inc., stated as she reflected back over the Fall semester she is incredibly grateful to the donors, community friends and all who believe in and support our community college students. As an overwhelming show of generosity, the Foundation has received over a half million dollars in contributions this second quarter of the year. This included \$341,000 in EITC to support Early College; \$70,000 from our annual dinner to support scholarships and student assistance funds; and over \$108,000 in new scholarships and renewal commitments. These funds will make a significant impact and will go a long way in supporting the region's high school students and our new and current students. All of the support could not have been possible without our donors and giving community.

Events held this past year we celebrated was the 20th anniversary of the Hazleton Center, 32nd Alumni Craft Festival , 39th annual

	<p>scholarship dinner, 15th anniversary of our Schulman gallery and the 10th anniversary of our Joseph A. Paglianite Culinary institute. Thank you to everyone here and to our trustees who participated in these events.</p> <p>We look forward to 2022 to continue to support our students and celebrate their accomplishments as their success is truly our success. Thank you and have a wonderful holiday filled with happiness and especially good health.</p> <p>President Leary concluded his report wishing everyone a very wonderful holiday and healthy New Year.</p>	
<p>5. Board By-Laws Sub-Committee Report 5A. Amended LCCC Board By-Laws</p>	<p>5. Catherine R. O'Donnell, Esq., Chair, Board By-Laws Sub-Committee, presented the following report.</p> <p>5A. Committee Chair O'Donnell stated under Board Chair Rodgers, a sub-committee was established, consisting of Committee Chair O'Donnell, Trustee Distasio, Trustee Unvasky, Trustee Joseph Lettiere and Board Chair Rodgers, to review the existing by-laws and by-laws of the Pennsylvania community colleges. Over the past 6 months, 5 meetings were held. A red lined draft was circulated among the trustees for their review and input.</p> <p>At this time Board By-Laws Committee Chair O'Donnell recommended the Luzerne County Community College Board of Trustees approve the Luzerne County Community College Board of Trustees By-Laws as amended, on this date, December 21, 2021.</p> <p>Board Chair Rodgers thanked Vice Chair O'Donnell for leading the charge of this sub-committee.</p>	<p>ACTION TAKEN/FOLLOW UP ACTION NEEDED</p> <p>5A. Approved. Motion made by Bernard W. Graham, Ph.D.; seconded by Lynn Distasio.</p> <p>Vote was all "yes". Motion carried.</p>
<p>6. Report of the Executive Committee 6A. Classified Salary Adjustment</p>	<p>6. Daniel C. Rodgers, Board Chair, presented the report of the Executive Committee.</p> <p>6A. Recommend the Luzerne County Community College Board of</p>	<p>ACTION TAKEN/FOLLOW UP ACTION NEEDED</p> <p>6A. Approved. Motion made by Erin K.</p>

	Trustees approve an adjustment to the classified staff minimum starting hourly wage to \$15 an hour. Classified Staff earning in excess of \$15 an hour will receive a pay equity adjustment of \$800 to their base wage.	Keating, Ed.D.; seconded by Joan M. Blewitt, Ph.D. Vote was all "yes". Motion carried
7. Report of the Academic Committee	7. Bernard W. Graham, Ph.D., Chair, LCCC Academic Committee, presented the following report.	ACTION TAKEN/FOLLOW UP ACTION NEEDED
7A. Academic Calendar	7A. Recommend the Luzerne County Community College Board of Trustees approve the revised Academic Calendar Summer 2023 through Spring 2026.	7A. Approved. Motion made by Catherine R. O'Donnell, Esq., Vice Chair; seconded by Paul Halsey. Vote was all "yes". Motion carried
7B. Recommend Approval of Grading System Policy	7B. Recommend the Luzerne County Community College Board of Trustees approve the Grading System Policy as attached.	7B. Approved. Motion made by Joan M. Blewitt, Ph.D.; seconded by Catherine R. O'Donnell, Esq., Vice Chair. Vote was all "yes". Motion carried
7C. Curriculum Additions, Deletions and Modifications	7C. Recommend the Luzerne County Community College Board of Trustees approve the Curriculum Additions, Deletions and Modifications as attached.	7C. Approved. Motion made by Lynn Distasio; seconded by Holly Evanoski, Board Secretary. Vote was all "yes". Motion carried.
8. Report of the Finance Committee	8. Board Chair Rodgers presented the Finance Committee report. (Committee Chair Unvarsky loss internet connection and therefore unable to present the report)	ACTION TAKEN/FOLLOW UP ACTION NEEDED
8A. Bid #501-Automotive Department Vehicle Purchase	8A. Recommend the Luzerne County Community College Board of Trustees approve the award of the Automotive Department Vehicle Purchase bid # 501 to the lowest responsible bidder: Whitmoyer Ford, Inc. in the amount of \$32,400.00.	8A. Approved. Motion made by Catherine R. O'Donnell, Esq., Vice Chair; seconded by Joan M. Blewitt, Ph.D. Vote was all "yes". Motion carried.
8B. Bid #502-eSports Arena Equipment	8B. Recommend Luzerne County Community College Board of Trustees approve the award of Bid # 502:	8B. Approved. Motion made by Catherine R. O'Donnell, Esq., Vice Chair;

<p>8C. RFP, Online/Virtual Tutoring Service Technology Program</p>	<p><u>Section A</u> - IntegraONE for gaming computers and accessories in the amount of \$27,808.45; <u>Section B</u> - CDW Government for partial miscellaneous equipment in the amount of \$5,937.48 with remaining A/V equipment to B&H Photo and Amazon (lowest quotes) in the amount of \$8,481.62; <u>Section C</u> - CDW Government for eSports furniture in the amount of \$13,314.99; The total amount for sections A through C is \$55,542.54.</p>	<p>seconded by Bernard W. Graham, Ph.D. Vote was all "yes." Motion carried.</p>
<p>8D. RFP, Property and Liability Insurance Proposal</p>	<p>8C. Recommend Luzerne County Community College Board of Trustees approve the proposal to Brainfuse at a rate of \$23.00 per hour.</p>	<p>8C. Approved. Motion made by Joan M. Blewitt, Ph.D.; seconded by Catherine R. O'Donnell, Esq., Vice Chair. Vote was all "yes". Motion carried.</p>
<p>8E. RFP, Workers' Compensation Insurance Contract</p>	<p>8D. Recommend Luzerne County Community College Board of Trustees approve the award of the Property and Liability Insurance Contract in the amount of \$198,985.00 per year for three (3) years to Joseph J. Joyce Associates, Inc.</p>	<p>8D. Approved. Motion made by Catherine R. O'Donnell, Esq., Vice Chair; seconded by Joan M. Blewitt, Ph.D. Vote was all "yes". Motion carried.</p>
<p>8F. Ratification, Greater Susquehanna and Hazleton Center Science Lab Renovation Final Projects Change Orders</p>	<p>8E. Recommend Luzerne County Community College Board of Trustees approve the award of the Worker's Compensation Insurance Contract in the amount of \$62,942.00 per year for three (3) years to Joseph J. Joyce Associates, Inc. The new premium will result in a savings of \$111,000 over three (3) years.</p> <p>8F. Recommend the Luzerne County Community College Board of Trustees ratify and reaffirm approval of change order #6 for the Greater Susquehanna Center Science Lab in the amount of \$10,434 and change order #5 for the Hazleton Center Science Lab in the amount of \$7,174 to Bognet, Inc., for the unforeseen costs associated with the project.</p>	<p>8E. Approved. Motion made by seconded Paul Halsey; seconded by Lynn Distasio. Vote was all "yes". Motion carried.</p> <p>8F. Approved. Motion made by Bernard W. Graham, Ph.D.; seconded by Joseph Lettiere. Vote was all "yes". Motion carried.</p>
<p>9. Report of the Human Resources Committee</p>	<p>9. Daniel Rodgers, Board Chair, noted there were no action items of the Human Resources Committee at this time.</p>	<p>ACTION TAKEN/FOLLOW UP ACTION NEEDED</p>

10. Report of the Legislative Committee	10. Catherine O'Donnell, Esq., Chair, LCCC Legislative Committee, stated there were no action items to report.	ACTION TAKEN/FOLLOW UP ACTION NEEDED
Informational Items		
1.Public Comment	Daniel Rodgers, Board Chair, opened the floor for public comment.	1.N/A
2.Unfinished Business-Previous Meeting	2.N/A	2. No action required.
3.Informational-Executive Committee	3. N/A	3. No action required.
4.Informational- Human Resources Committee	4.Board Chair Rodgers stated that the Information on appointments and leave reports are included with the Board agenda can be located on page 5 of the Board agenda.	4. No action required.
5. Communications	5. All communications were included in the Board packets.	5. No action required.
6.Adjournment	6. Daniel Rodgers, Board Chair, asked for a motion to adjourn. Board Chair Rodgers wished everyone happy holidays and a very Happy New Year. On behalf of trustee Anthony Seiwell who was unable to be present this evening, Board Chair Rodgers extended Trustee Seiwell's wishes for a very Happy Holiday and a New Year.	6. Motion to adjourn was made by Joan M. Blewitt, Ph.D.; seconded by Catherine R. O'Donnell, Esq., Vice Chair. All in favor. Motion carried.

TREASURER'S REPORT



Luzerne County Community College

Treasurer's Report - Operating Fund - 2022 Fiscal Year

Date Range: 07/01/2021 - 12/31/2021

Operating	Current Year Budget	Current Year Actuals	Projected Actuals & Variance <small>(Red - Expenses Over Budget or Revenue Under Budget)</small>	
Expenses				
1. Salaries				
Faculty	\$ 7,815,696.50	\$ 3,176,971.75	\$ 6,353,943.50	-19%
Classified	\$ 4,635,153.17	\$ 1,983,369.31	\$ 3,966,738.62	-14%
Administrators	\$ 3,989,080.06	\$ 1,743,647.56	\$ 3,487,295.12	-13%
Adjunct Faculty	\$ 2,200,000.00	\$ 1,058,147.07	\$ 2,116,294.14	-4%
Overload Pay For FT Faculty	\$ 1,800,000.00	\$ 826,201.35	\$ 1,652,402.70	-8%
Security	\$ 208,748.48	\$ 100,957.96	\$ 201,915.92	-3%
Dept Chair & Coordinators	\$ 186,423.71	\$ 87,819.90	\$ 175,639.80	-6%
Non-Credit Instructors	\$ 167,000.00	\$ 67,959.00	\$ 135,918.00	-19%
Overtime Pay For FT Faculty	\$ 64,410.98	\$ 14,187.71	\$ 28,375.42	-56%
Work Study Program/Tutors	\$ 60,000.00	\$ 37,221.04	\$ 74,442.08	24%
Coaches & Advisors	\$ 9,567.50	\$ -	\$ -	-100%
Total Salary	\$ 21,136,080.40	\$ 9,096,482.65	\$ 18,192,965.30	-14%
2. Benefits				
Health Care	\$ 6,575,998.48	\$ 2,800,890.09	\$ 6,001,780.00	-9%
Retirement - TIAA	\$ 1,439,459.62	\$ 706,368.60	\$ 1,412,737.20	-2%
Early Retirement Incentives	\$ 1,200,000.00	\$ (18,499.31)	\$ 1,200,000.00	0%
Retirement - State	\$ 1,024,608.23	\$ 503,689.80	\$ 1,007,379.60	-2%
FICA/Social Security & Medicare	\$ 808,455.45	\$ 581,096.82	\$ 695,881.00	-14%
Health Care Waivers	\$ 801,016.19	\$ 439,207.07	\$ 878,414.14	10%
Retirement - PSERS	\$ 308,426.62	\$ 193,474.45	\$ 386,948.90	25%
Other	\$ 225,000.00	\$ 101,799.18	\$ 203,598.36	-10%
Dental	\$ 183,797.45	\$ 84,867.41	\$ 169,734.82	-8%
Life Insurance	\$ 100,000.00	\$ 55,278.90	\$ 110,557.80	11%
Disability	\$ 34,000.00	\$ 15,521.98	\$ 31,043.96	-9%
Vision	\$ 26,702.36	\$ 13,859.12	\$ 27,718.24	4%
Total Benefits	\$ 12,727,464.40	\$ 5,477,554.11	\$ 12,125,794.02	-5%
3. Remaining Expenses				
Miscellaneous - All Other Expenses	\$ 1,498,190.00	\$ 689,262.17	\$ 1,378,524.34	-8%
Utilities	\$ 1,252,489.80	\$ 558,679.61	\$ 1,117,359.22	-11%
Supplies	\$ 1,124,474.80	\$ 390,444.92	\$ 780,889.84	-31%
Technology Software & Equipment	\$ 821,137.73	\$ 633,301.70	\$ 850,000.00	4%
Contracted Services & Consultants	\$ 761,659.00	\$ 416,122.99	\$ 780,000.00	2%
Maintenance Agreements	\$ 478,200.00	\$ 220,504.58	\$ 441,009.16	-8%
Advertising	\$ 464,000.00	\$ 231,020.91	\$ 462,041.82	0%
Insurances	\$ 220,000.00	\$ (89,759.73)	\$ 220,000.00	0%
Travel & Conference	\$ 216,817.00	\$ (154,117.10)	\$ 120,000.00	-45%
Equipment Repairs	\$ 208,500.00	\$ 45,532.59	\$ 91,065.18	-56%
Total Remaining Expenses	\$ 7,045,468.33	\$ 2,940,992.64	\$ 6,240,889.56	-11%
4. Budget Adjustments				
Transfer to Other Funds	\$ 1,015,551.89	\$ -	\$ -	-100%
Total Expenses	\$ 41,924,565.02	\$ 17,515,029.40	\$ 36,559,648.88	-13%



Luzerne County Community College

Treasurer's Report - Operating Fund - 2022 Fiscal Year

Date Range: 07/01/2021 - 12/31/2021

Operating	Current Year Budget	Current Year Actuals	Projected Actuals & Variance <small>(Red - Expenses Over Budget or Revenue Under Budget)</small>	
Revenue				
1. Sponsorships				
Commonwealth of PA	\$ 12,526,152.00	\$ 6,263,076.00	\$ 12,526,152.00	0%
Luzerne County	\$ 5,897,500.00	\$ 2,960,457.50	\$ 5,920,915.00	0%
Total Sponsorships	\$ 18,423,652.00	\$ 9,223,533.50	\$ 18,447,067.00	0%
2. Tuition				
Fall - (In-County)	\$ 3,990,810.48	\$ 4,021,194.01	\$ 4,021,000.00	1%
Fall - (Out-of-County)	\$ 1,425,289.46	\$ 1,568,027.80	\$ 1,570,000.00	10%
Fall - (Out-of-State & Interntl)	\$ 142,528.95	\$ 227,572.20	\$ 227,000.00	59%
Fall - (Early College)	\$ 142,528.95	\$ 161,186.00	\$ 162,000.00	14%
Spring - (In-County)	\$ 3,818,386.91	\$ 2,651,177.70	\$ 3,894,753.72	2%
Spring - (Out-Of-County)	\$ 1,363,709.61	\$ 1,162,048.00	\$ 1,390,983.18	2%
Spring - (Out-of-State & Interntl)	\$ 136,370.96	\$ 170,850.00	\$ 139,097.40	2%
Spring - (Early College)	\$ 136,370.96	\$ 109,150.00	\$ 139,098.38	2%
Summer 1	\$ 1,004,387.25	\$ 135,288.00	\$ 1,004,387.00	0%
Summer 2	\$ 274,005.87	\$ 234,717.00	\$ 235,000.00	-14%
Winter Intersession	\$ 193,353.95	\$ 150,801.00	\$ 152,000.00	-21%
Other Tuition	\$ 3,000.00	\$ (47,854.91)	\$ 5,000.00	67%
Total Tuition	\$ 12,630,743.35	\$ 10,544,156.80	\$ 12,940,319.68	2%
3. Fees				
General Service	\$ 2,032,611.99	\$ 1,754,401.78	\$ 2,100,000.00	3%
Technology	\$ 1,947,410.01	\$ 1,587,001.46	\$ 1,950,000.00	0%
Course	\$ 1,711,000.00	\$ 1,452,594.80	\$ 1,720,000.00	1%
Other	\$ 100,775.00	\$ 62,715.00	\$ 100,000.00	-1%
Total Fees	\$ 5,791,797.00	\$ 4,856,713.04	\$ 5,870,000.00	1%
4. Other				
Miscellaneous	\$ 833,000.00	\$ 571,689.28	\$ 850,000.00	2%
Interest Income	\$ 275,000.00	\$ 113,643.83	\$ 227,287.66	-17%
Total Other	\$ 1,108,000.00	\$ 685,333.11	\$ 1,077,287.66	-3%
5. Budget Adjustments				
Adjustments to Balance Budget	\$ 4,008,078.87	\$ -	\$ -	-100%
Total Revenue	\$ 41,962,271.22	\$ 25,309,736.45	\$ 48,334,674.34	-9%

Budgeted Revenue Minus Budgeted Expenses	\$ 37,706.20
Projected Actual Revenue Minus Projected Actual Expenses	\$ 1,775,025.46



Luzerne County Community College

Treasurer's Report - Bookstore Fund - 2022 Fiscal Year

Date Range: 07/01/2021 - 12/31/2021

Bookstore	Current Year Budget	Current Year Actuals	Projected Actuals & Variance <small>(Red - Expenses Over Budget or Revenue Under Budget)</small>	
Expenses				
1. Salaries				
Classified	\$ 105,652.20	\$ 48,435.71	\$ 96,871.42	-8%
2. Benefits				
Health Care	\$ 48,282.36	\$ 14,508.54	\$ 35,000.00	-28%
Health Care Waivers	\$ 32,835.02	\$ 19,034.00	\$ 38,068.00	16%
Retirement - TIAA	\$ 8,980.22	\$ 3,711.22	\$ 7,422.44	-17%
FICA/Social Security & Medicare	\$ 7,317.39	\$ 5,403.25	\$ 6,709.00	-8%
Dental	\$ 2,621.88	\$ 1,310.94	\$ 2,621.88	0%
Life Insurance	\$ 619.83	\$ 228.30	\$ 456.60	-26%
Vision	\$ 373.44	\$ 186.72	\$ 373.44	0%
Disability	\$ 277.39	\$ 100.32	\$ 200.64	-28%
Retirement - State	\$ -	\$ 3,116.96	\$ 6,233.92	
Total Benefits	\$ 101,307.53	\$ 47,600.25	\$ 97,085.92	-4%
3. Remaining Expenses				
Miscellaneous Expenses	\$ 3,000.00	\$ 6.60	\$ 2,000.00	-33%
Total Expenses	\$ 209,959.73	\$ 96,042.56	\$ 195,957.34	-7%
Revenue				
Commission	\$ 200,000.00	\$ 58,590.03	\$ 180,000.00	-10%
Interest	\$ 10,000.00	\$ 12,831.01	\$ 25,662.02	157%
Total Revenue	\$ 210,000.00	\$ 71,421.04	\$ 205,662.02	-2%

Budgeted Revenue Minus Budgeted Expenses	\$ 40.27
Projected Actual Revenue Minus Projected Actual Expenses	\$ 9,704.68



Luzerne County Community College

Treasurer's Report - Food Services Fund - 2022 Fiscal Year

Date Range: 07/01/2021 - 12/31/2021

Food Services	Current Year Budget	Current Year Actuals	Projected Actuals & Variance <small>(Red - Expenses Over Budget or Revenue Under Budget)</small>	
Expenses				
1. Salaries				
Classified	\$ 98,714.90	\$ 46,149.68	\$ 92,299.36	-6%
Administration	\$50,040.90	25,973.64	\$ 51,947.28	4%
Total Salary	\$ 148,755.80	\$ 72,123.32	\$ 144,246.64	-3%
2. Benefits				
Health Care	\$ 61,453.64	\$ 21,916.56	\$ 51,000.00	-17%
TIAA	\$ 16,696.81	\$ 7,398.79	\$ 14,797.58	-11%
FICA/Social Security & Medicare	\$ 12,503.45	\$ 6,485.87	\$ 12,971.74	4%
Health Care Waivers	\$ 9,056.96	\$ 7,832.90	\$ 15,665.80	73%
Dental	\$ 1,502.76	\$ 813.54	\$ 1,627.08	8%
Life Insurance	\$ 814.90	\$ 387.66	\$ 775.32	-5%
Disability	\$ 567.86	\$ 137.54	\$ 275.08	-52%
Vision	\$ 170.76	\$ 85.38	\$ 170.76	0%
Total Benefits	\$ 102,767.14	\$ 45,058.24	\$ 97,283.36	-5%
3. Remaining Expenses				
Food Supplies	\$ 85,000.00	\$ 51,133.97	\$ 102,267.94	20%
Collection Fees	\$ 5,000.00	\$ 3,730.10	\$ 7,460.20	49%
Supplies	\$ 1,000.00	\$ 402.05	\$ 804.10	-20%
Total Remaining Expenses	\$ 91,000.00	\$ 55,266.12	\$ 110,532.24	21%
Total Expenses	\$ 342,522.94	\$ 172,447.68		
Revenue				
Food Sales	\$ 100,000.00	\$ 76,981.41	\$ 153,962.82	54%
Vending Sales	\$ 49,000.00	\$ 17,972.95	\$ 49,000.00	0%
Interest	\$ 10,000.00	\$ 7,003.32	\$ 14,006.64	40%
Transfer of Operating Funds	\$ 183,522.94			
Total Revenue	\$ 342,522.94	\$ 101,957.68	\$ 216,969.46	-37%

Budgeted Revenue Minus Budgeted Expenses	\$ -
Projected Actual Revenue Minus Projected Actual Expenses	\$ (135,092.78)



Luzerne County Community College

Treasurer's Report - Capital Fund - 2022 Fiscal Year

Date Range: 07/01/2021 - 12/31/2021

	Current Year Budget	Current Year Actuals	Projected Actuals & Variance (Red - Expenses Over Budget or Revenue Under Budget)
Expenses			
Debt Service	\$ 1,291,693.00	\$ 947,144.06	\$ 1,291,693.00 0%
Facility Leases	\$ 913,730.95	\$ 344,758.26	\$ 689,516.52 -25%
Equipment Leases	\$ 427,755.00	\$ 969,127.18	\$ 1,360,254.00 218%
Equipment Purchases	\$ 163,106.20	\$ 233,043.41	\$ 350,000.00 115%
Architect Fees	\$ -	\$ 49,255.52	\$ 98,511.04
Contractors	\$ -	\$ 188.00	\$ 376.00
Total Expenses	\$ 2,796,285.15	\$ 2,543,516.43	\$ 3,790,350.56 36%
Revenue			
State Appropriation	\$ 1,366,150.00	\$ 674,005.12	\$ 1,366,150.00 0%
Capital Fees	\$ 275,000.00	\$ 224,285.43	\$ 448,570.86 63%
County Appropriation	\$ 272,500.00	\$ 136,250.00	\$ 272,500.00 0%
Sale of Assets	\$ 10,000.00	\$ 500.00	\$ 1,000.00 -90%
Interest	\$ 2,500.00	\$ 4,706.29	\$ 9,412.58 277%
Transfer of Operating Funds	\$ 832,028.95	\$ -	\$ - -100%
Total Revenue	\$ 2,758,178.95	\$ 1,039,746.84	\$ 2,697,633.44 -24%

Calculated Projected Actuals
\$ 1,894,288.12
\$ 689,516.52
\$ 1,938,254.36
\$ 466,086.82
\$ 98,511.04
\$ 376.00
\$ 1,348,010.24
\$ 448,570.86
\$ 272,500.00
\$ 1,000.00
\$ 9,412.58
\$ -

Budgeted Revenue Minus Budgeted Expenses	\$ (38,106.20)
Projected Actual Revenue Minus Projected Actual Expenses	\$ (1,692,717.12)

Override Actuals	
\$ 1,291,693.00	
\$ 1,360,254.00	
\$ 350,000.00	
\$ 1,366,150.00	

Executive Committee Action Item



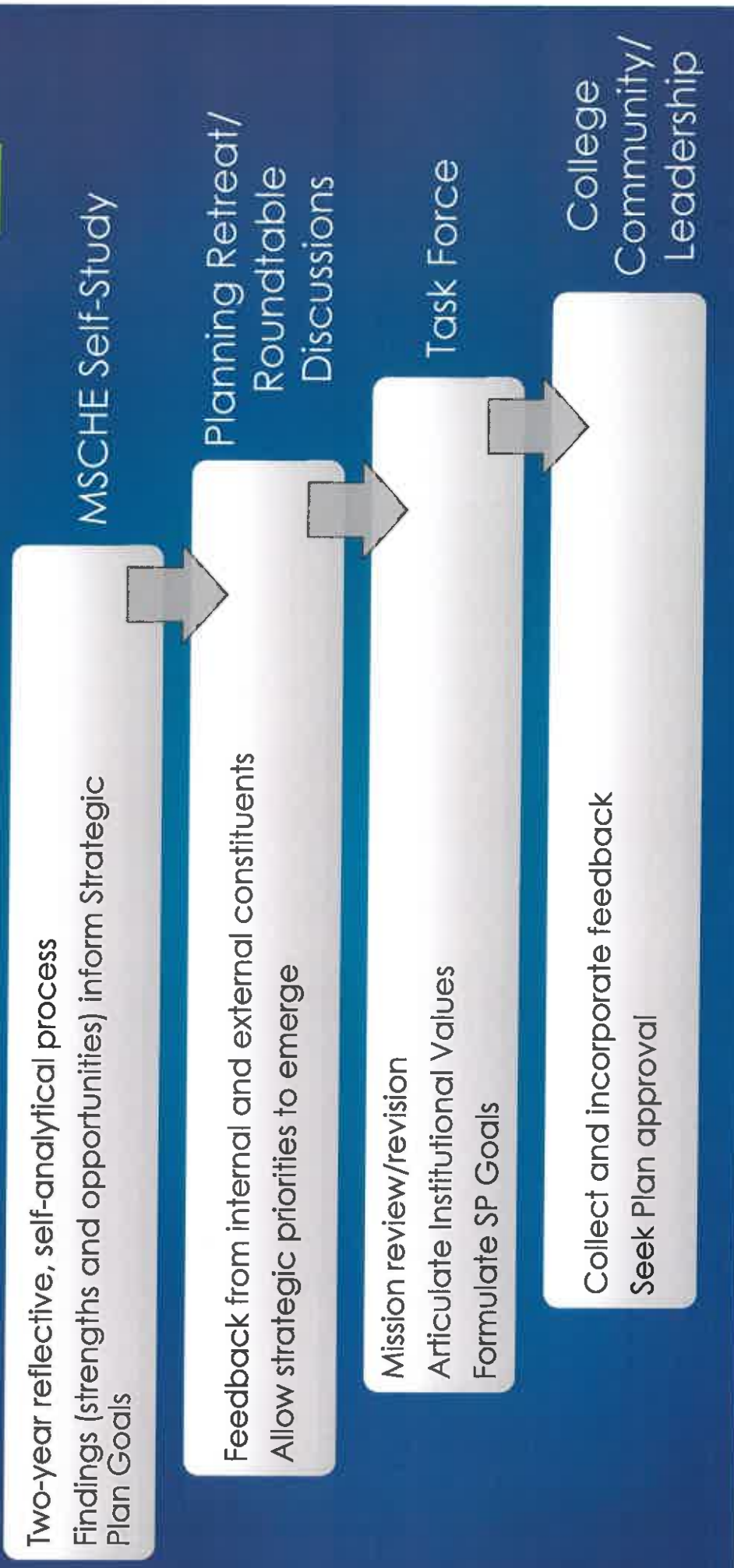
Strategic Plan 2022 - 2026

Graceann L. Platukus, EdD
February 2022

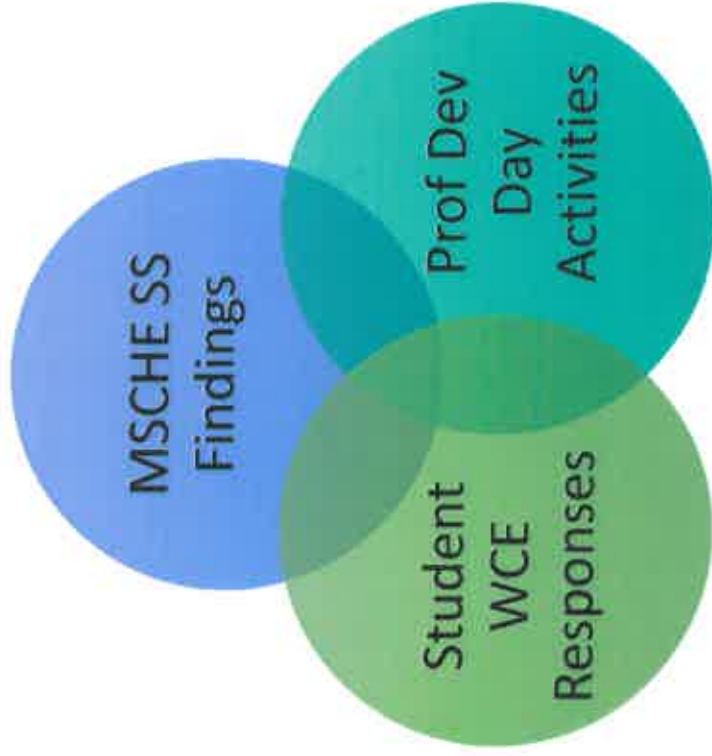
Planning Process

Path to Strategic Plan Development

3



Strategic Planning Information Sources



MSCHE Self Study Report



Internal Performance
Data, Surveys,
Assessments

External Market Data

Key Components of Planning

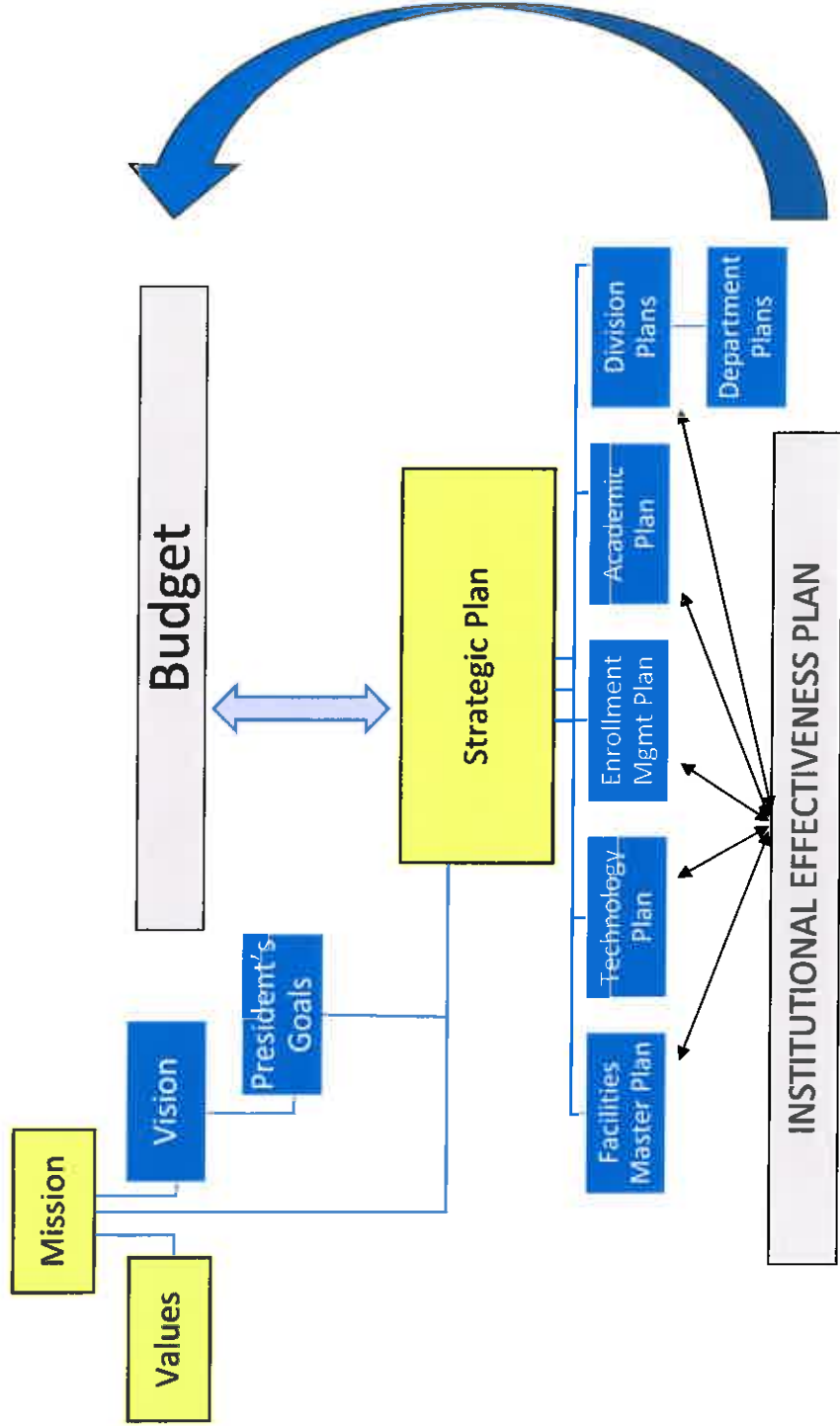
	Addressed during Self-Study	Addressed following Self-Study
Mission review		✓
Demographic, educational, societal and economic environment analysis		✓
College strengths and challenges	✓	
Student learning assessment	✓	
Assessment of resources (financial, human, physical)	✓	
Build upon previous SP initiatives		✓
Engagement of internal and external constituents	✓	
Consensus building	✓	
Measures of success		✓
Alignment/links between assessment, planning, and resource allocation		✓
Compliance with accreditation standards	✓	

Planning Process Goals Achieved

6

- ✓ 1. Mission review – Recommend revision
- ✓ 2. Articulate Institutional Values
- ✓ 3. Simplify terminology used in planning and assessment
 - Eliminate Institutional Goals
 - Limit use of terms such as objectives, priorities, etc.
- ✓ 4. Formulate Strategic Plan
 - MSCHE Self-Study as foundation
 - Internal and external constituent feedback
 - Task Force appointed to consolidate information

Planning Framework



Mission Review





Current Mission

9

Luzerne County Community College provides excellence in education, fosters student success in achievement of goals, and positively impacts Luzerne County and the surrounding Northeast Pennsylvania region.

- MSCHE Self-Study commended the institutional commitment to our Mission
- Survey and feedback affirmed LCCC's Mission with one notable exception, **identifying the institution's unique characteristics**



Proposed Mission

10

Luzerne County Community College is a student-centered institution prioritizing support and access to an inclusive, equitable learning environment that fosters academic and personal success and strengthens communities in the Northeast Pennsylvania region.

Based on emphasis in comments/feedback:

- Focus on Students
- Accessibility
- DEI



Institutional Values

The College community shares these core values driving decision-making:

- **Student-centeredness:** Empowering students to succeed
- **Access:** Ensuring inclusive, equitable learning for all
- **Diversity:** Prioritizing a welcoming climate of inclusivity
- **Community of support:** Collaboratively working to support all members of the LCCC community
- **Personal engagement:** Creating a sense of belonging
- **Commitment to teaching, serving and learning:** Knowledgeable faculty and staff invested in student success

Values generated from:

- MSCHÉ commendations
- Stakeholder observations (employees, students, external constituents)
- Task Force recommendations

Strategic Plan Goals

Strategic Plan Goals 2022-2026



**Recruitment,
Retention &
Completion
(RRC)**



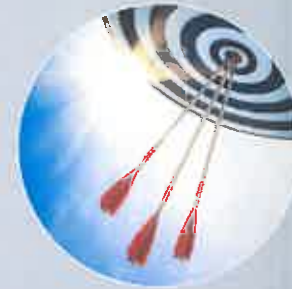
**Excellence in
Education**



**Regional
Economic
Engine**



**Diverse,
Equitable and
Inclusive
Practices**



**Organizational
Success**



Strategic Plan Goal 1 – Recruitment, Retention & Completion (RRC)

15

1.1 Enrollment opportunities ensuring access and academic attainment

1.3 Pathways to completion and transfer

1.2 Technology and innovation to improve student engagement and enrollment

1.4 Empower students as partners in learning

Strategic Plan Goal 2 – Excellence in Education

16

2.1 Foundational competencies through a learner centered curriculum

2.2 State-of-the-art technology into all curriculums

2.3 Tools to develop student skills, knowledge and dispositions to be lifelong learners

2.4 Academic offerings aligning student need and market demand

Strategic Plan Goal 3 – Regional Economic Engine

17

3.1
Collaborative
alliances with
community
stakeholders

3.2
Increase
educational
attainment in
the region

3.3
Communicate
LCCC's value
proposition
and return to
the
community

4.1 Transformative practices for a diverse, inclusive and equitable campus climate

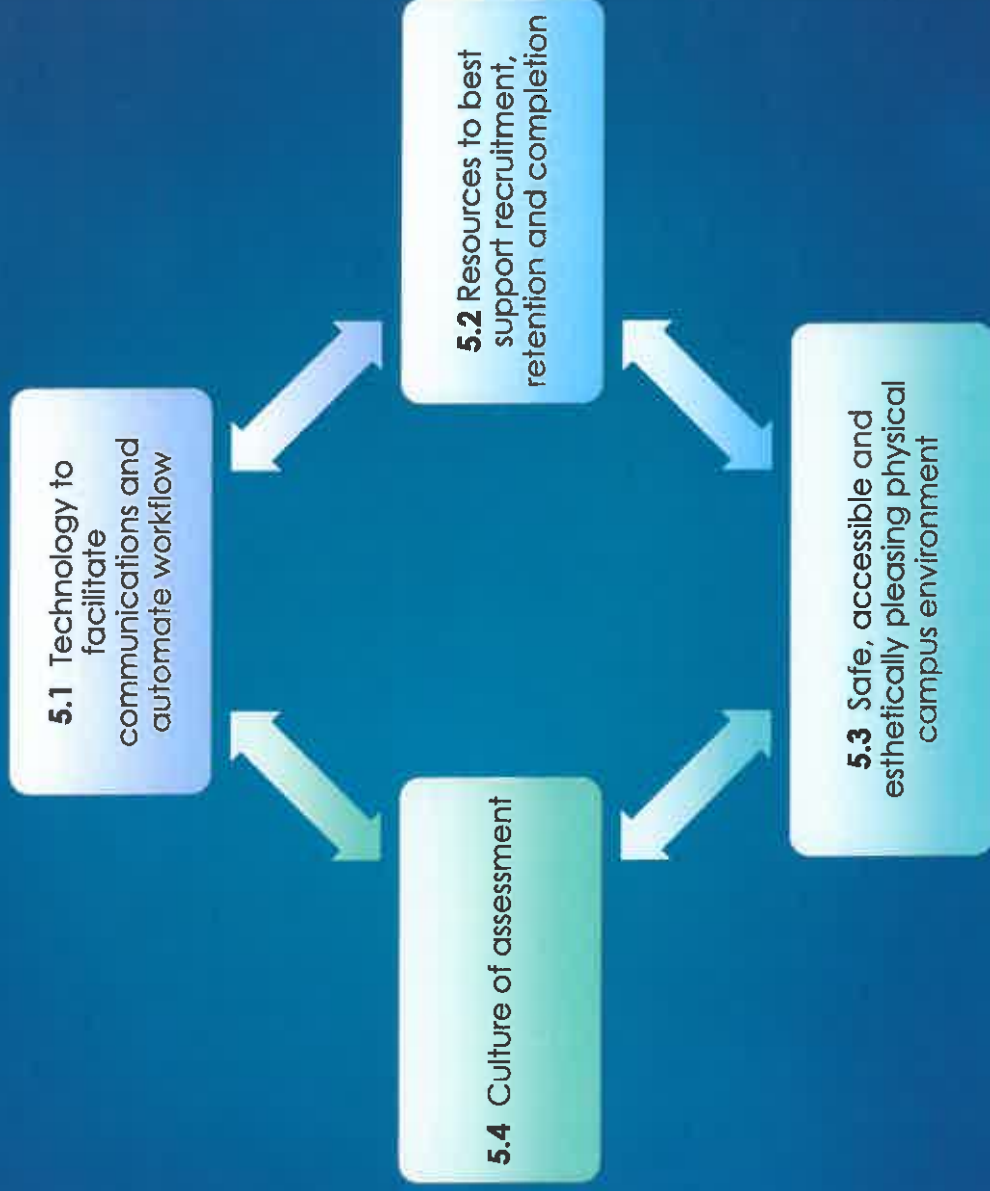
4.2 Recruit, retain and support a diverse College community

4.3 Inclusive excellence in curriculum, instruction and assessment

4.4 Engaging, inspirational and educational practices for students and employees

Strategic Plan Goal 5 – Organizational Success

19



Next Steps

20

- **Board of Trustees vote**
 - Mission affirmation/enhancements
 - Institutional Values
 - Strategic Plan
- **Finalize Plan metrics/KPIs following approval**
- **Execute Communication Plan**
 - Develop Plan tagline
 - Website update
 - Communication tool development (i.e. brochure, signs, etc.)
- **Division/Department Plan Updates**
 - Identify initiatives to support Plan
 - Implement & assess

**Student Success and Workforce
Development Committee
Action Item**

Spring 2022	
Registration - Begins October 2021	ongoing
Late Registration	Monday, January 31 & Tuesday, February 1, 2022
College In-Service	Wednesday, January 26, 2022 (Snow date Jan 27th)
Adjunct In-service	Wednesday, January 26, 2022 (Snow date Jan 27th)
Martin Luther King, Jr. Day (College Closed)	Monday, January 17, 2022
Classes Begin (All Locations except Wilkes-Barre Center & Late Start Sections)	Monday, January 31, 2022
Classes Begin – Wilkes-Barre Center & Late Start Sections	Monday, February 14, 2022
Fall 2022 Registration Begins	March 2022.
Deadline for Submitting Application for Graduation	Friday, February 25, 2022
Snow Make Up Day (No Class Unless Needed)	Monday, February 28, 2022
Professional Development Day (No Classes)	Wednesday, March 16, 2022
Snow Make Up Day (No Classes Unless Needed)	Thursday, April 14, 2022
Holiday Recess (College Closed)	Friday, April 15- Monday, April 18, 2022
Last Day of Classes	Friday, May 13, 2022
Final Exams	Saturday – Friday, May 14-20, 2022
Final Grades Due by Noon	Monday, May 23, 2022
Commencement	Thursday, May 26, 2022
Day after Graduation (College Closed)	Friday, May 27, 2022
<u>7 Week Session I</u>	1/31/22-3/18/22
Classes Begin	Monday, January 31, 2022
Classes End	Thursday, March 17, 2022
Final Exam	Friday, March 18, 2022
Final Grades Due by Noon	Monday, March 21, 2022
<u>7 Week Session II</u>	3/28/22-5/13/22
Classes Begin	Monday, March 28, 2022
Classes End	Thursday, May 12, 2022
Final Exam	Friday, May 13, 2022
Final Grades Due by Noon	Monday, May 23, 2022
*Refund Withdrawal Policy Information: https://www.luzerne.edu/admissions/tuition.jsp	

Rvsd 1/10/22

Due to Covid

2nd revision - snow make-up 2/28/22

not instructional day

**Audit, Finance and Facilities
Committee
Action Items**

RECOMMENDATION:

Recommend approval of Bid # 503 for Waste Removal.

Recommend Luzerne County Community College Board of Trustees approve the award of Bid # 503 in the amount of \$23,880.00 per year to Waste Reduction and Recycling.

Rationale:

This is a three (3) year contract to provide waste removal services to the College. The contract includes the Main Campus, the Joseph A. Paglianite Culinary Institute and the Francis S. and Marie Gill Carrozza, R.N., Health Science Center in downtown Nanticoke.



TO: THOMAS P. LEARY, President
FROM: Len Olzinski, Director of Purchasing
RE: Bid # 503 – Waste Removal (3 Years)
(Board Approval required)
DATE: January 20, 2022

Bid # 503 was advertised on December 29, 2021 and specifications were sent to 6 vendors. The bids for Waste Removal were received and opened on January 19, 2022. Four (4) bid packages were received and opened. The bid results are:

3 Year Contract

<u>NAME</u>	<u>Monthly Amount</u>	<u>Annual Amount</u>
Waste Reduction & Recycling	\$1,990.00	\$23,880.00
County Waste	\$2,350.00	\$28,200.00
Waste Management	\$2,857.87	\$34,294.44
J.P. Mascaro & Sons	\$3,632.00	\$43,584.00

I recommend that Bid # 503 be awarded to Waste Reduction and Recycling in the amount \$23,880.00 per year.

Rationale:

This is a three (3) year contract to provide waste removal services for the College. The contract includes the Main Campus, the Joseph A. Paglianite Culinary Institute and the Francis S. and Marie Gill Carrozza, R.N., Health Science Center in downtown Nanticoke.

On approval, a requisition will be entered into Datatel for processing and final approvals.

Please contact me with any questions or concerns.

Thank You.

C: Cheryl Baur, Vice President of Finance

RECOMMENDATION

Recommend approval of Bid # 504 for Air Flow Units.

Recommend Luzerne County Community College Board of Trustees approve the award of Bid # 504 in the amount of 28,593.60 to Hu-Friedy Mfg. Co. Inc.

Rationale:

Teaching guided biofilm therapy (GBT) to students, positions them to be leading-edge professionals when they enter the marketplace.

GBT denotes a method of biofilm management inclusive of the use of Air-Flow/Perio-Flow handpieces. This systematic, predictable method of biofilm management features the intentional removal of biofilm as a definitive procedure, using low-abrasive powder in a novel air polishing device. Therapy is performed prior to the instrumentation of hard deposits.

This equipment will update the technology used in the Dental Clinic to the latest industry standard and ensure program-learning outcomes/objectives are met. By purchasing, LCCC's students will have the practical experience necessary for transitioning to employment in the field.



TO: Thomas P. Leary, President
FROM: Len Olzinski, Director of Purchasing
RE: Bid # 504 – Air Flow Units
(Board Approval required)
DATE: January 21, 2022

Bid # 504 was advertised on December 29, 2021 and specifications were sent to 2 vendors. The bids for the Air Flow Units were received and opened on January 19, 2022. One (1) bid package was received and opened. The bid results are:

NAME	Unit Price Amount	Total Amount
Hu-Friedy Mfg. Co. Inc. 23@	\$1,243.20	\$28,593.60

I recommend that Bid # 504 by awarded to Hu-Friedy Mfg. Co. Inc. in the amount \$28,593.60.

Rationale:

Teaching guided biofilm therapy (GBT) to students, positions them to be leading-edge professionals when they enter the marketplace.

GBT denotes a method of biofilm management inclusive of the use of Air-Flow/Perio-Flow handpieces. This systematic, predictable method of biofilm management features the intentional removal of biofilm as a definitive procedure, using low-abrasive powder in a novel air polishing device. Therapy is performed prior to the instrumentation of hard deposits.

This equipment will update the technology used in the Dental Clinic to the latest industry standard and ensure program-learning outcomes/objectives are met. By purchasing, LCCC’s students will have the practical experience necessary for transitioning to employment in the field.

On approval, a requisition will be entered into Datatel for processing and final approvals.

Please contact me with any questions or concerns.

Thank You.

RECOMMENDATION:

Recommend approval of Bid # 505 – Wireless Upgrade

Recommend Luzerne County Community College Board of Trustees approve the award of Bid # 505:

Section A - IntegraONE for wireless access points in the amount of \$61,951.65 (Aruba);

Section B – IntegraONE for Software & Services in the amount of \$19,776.10 (Aruba);

Section C – IntegraONE for Miscellaneous equipment in the amount of \$1,460.85;

The total amount for sections A through C is **\$83,188.60**.

Rationale:

These items are for the College's wireless infrastructure upgrade which was pre-approved for funding under the GEER II grant.



TO: Thomas P. Leary, President
 FROM: Patricia Yench, Chief Information Officer
 RE: Bid # 505 – Wireless Upgrade
 DATE: January 24, 2022

Bid # 505 was advertised on December 23, 2021 and specifications were sent to 20 vendors. The College opened the bids on January 19, 2022. Seven (7) bid responses were received. The bid was comprised of 3 sections (A, B, C) and bidders could submit bids on individual sections. Alternate, comparable equipment submissions were allowed; but Aruba equipment was specified in the BID. The results are as follows:

Section A – Wireless Access Points

Dell = \$123,367.94 (Ruckus)
 CDW Government = \$100,168.35 (Aruba)
 Turnkey Technologies = \$83,024.52 (Aruba) with an alternate config option = \$82,271.20 (Aruba)
 Dagostino Electronic Services (DES) = \$81,420.00 (Alcatel-Lucent)
 Shadow Technologies = \$75,708.82 (Meraki)
 Howard Technology Solutions = \$68,446.00 (Extreme Networks)
 IntegraONE = \$61,951.65 (Aruba)

Section B – Software & Services

Dell = \$22,484.28 (Ruckus) plus Ruckus Analytics = \$15,975.00 (optional)
 CDW Government = \$24,350.02 (Aruba)
 Turnkey Technologies = \$28,620.50 (Aruba)
 Dagostino Electronic Services (DES) = \$22,010.00 (OmniVista Cirrus) + Professional Services option=\$11,785.00
 Shadow Technologies = \$16,513.08 (Meraki)
 Howard Technology Solutions = \$25,201.00 (Extreme Networks)
 IntegraONE = \$19,776.10 (Aruba)

Section C – Miscellaneous Equipment

Dell = \$295.00 (Partial Bid only)
 CDW Government - \$2,473.42
 Turnkey Technologies = \$1,912.72
 Dagostino Electronic Services (DES) = \$3,710.00
 Shadow Technologies = \$594.44 (Partial Bid only)
 Howard Technology Solutions = \$1,772.00
 IntegraONE = \$1,460.85

I recommend the bid be awarded to the lowest responsible bidders for the specified Aruba equipment.

Section A - IntegraONE for wireless access points in the amount of \$61,951.65 (Aruba);

Section B – IntegraONE for Software & Services in the amount of \$19,776.10 (Aruba);

Section C – IntegraONE for Miscellaneous equipment in the amount of \$1,460.85;

The total amount for sections A through C is **\$83,188.60**.

Luzerne County Community College
Bid #505 - Wireless Upgrade

80

Section A - WAPs				
Quantity	Description	Item Cost	Line Total	
21	JZ377A Aruba AP-535 (US) Unified AP	\$ 581.45	\$ 12,210.45	
16	R3V48A Aruba AP-505H (US) Unified AP	\$ 270.60	\$ 4,329.60	
103	Q9H63A Aruba AP-515 (US) Unified AP	\$ 425.10	\$ 43,785.30	
1	R4H18A Aruba AP-575 (US) Outdoor-11ax AP	\$ 813.15	\$ 813.15	
1	R4H23A Aruba AP-577 (US) Outdoor-11ax AP	\$ 813.15	\$ 813.15	
			Total Section A	\$ 61,951.65

Totals				
Section	Description	Amt	Vendor	Req/PO#
A	WAPs	\$ 61,951.65		
B	Software & Services	\$ 19,776.10		
C	Miscellaneous	\$ 1,460.85		
		Total	\$ 83,188.60	

Section B - Software & Services				
Quantity	Description	Item Cost	Line Total	
142	Q9Y59AAE Aruba Central AP Foundation 3y Sub E-STU	\$ 138.60	\$ 19,681.20	
1	H1M1B5E Aruba 3Y FC NBD Exch HW AP-575 SVC [for R4H18A]	\$ 47.45	\$ 47.45	
1	H1M1K3E Aruba 3Y FC NBD Exch HW AP-577 SVC [for R4H23A]	\$ 47.45	\$ 47.45	
			Total Section B	\$ 19,776.10

Section C - Miscellaneous				
Quantity	Description	Item Cost	Line Total	
1	JY728A AP-CBL-SERU Console Adapter Cable	\$ 10.10	\$ 10.10	
16	R3V58A AP-500H-MINT1 Kit with Single-gang Wall-box Mount Adapter for 500H Series AP	\$ 10.10	\$ 161.60	
13	Q9G71A AP-MINT-MP10-D AP mount bracket 10-pack D	\$ 87.45	\$ 1,136.85	
1	JW053A AP-270-MNT-V2 AP-270 Series Outdoor Pole/Wall Short Mount Kit	\$ 45.45	\$ 45.45	
1	R6W11A AP-270-MNT-H3 AP-270 Series Outdoor AP Hanging or Dual-Fit Install Mount Kit	\$ 54.80	\$ 54.80	
1	Samsung SBP-300KM	\$ 52.05	\$ 52.05	
			Total Section C	\$ 1,460.85



February 1, 2022 Audit, Finance, & Facilities Committee Meeting

February 22, 2022 Board of Trustees Meeting

BOARD RESOLUTION TO APPROVE CAPITAL PROJECTS

Luzerne County Community College ("LCCC") Board of Trustees approve the capital projects to be submitted in March 2022 via the Pennsylvania Department of Education ("PDE") capital application process.

Additionally, LCCC Board of Trustees approve the authorization of matching funds for any capital project submitted via the PDE capital application process and approved for funding by PDE for FY2022-2023.

The capital projects, in priority order, approved to be submitted to PDE in the March 2022 capital application process and the estimated costs are:

Building 1 Switchgear Replacement - \$200,018

Water Infiltration Remediation - \$100,000

Main Parking Lot Paving and Replacement of Sidewalk and Curbing - \$1,600,000

Final Board of Trustee approval of the project(s) will be submitted with exact funding amounts when approved for funding by PDE. All College policies and procedures will be followed.

Rationale:

The switchgear for the buildings needs to be periodically refurbished to keep the electrical components clean and operating properly. This refurbishing was performed in 2020 and it was recommended, based on that work, that the original equipment (manufactured in 1972 and installed in 1974) be replaced for both safety and operational purposes. The Building 5 switchgear was replaced in November 2021. The Building 1 switchgear is the second of three on our campus to be replaced. Building 3 switchgear will be the third replacement to take place in a subsequent year upon availability of funding.

Water infiltration has been occurring in the Campus Center during heavy rains. The architects and engineers have determined the best solutions to remediate the issue to eliminate further and/or more substantial damage to the building and its structure.

The Main Parking Lot was last repaved in 2007 and is in need of being repaved for both aesthetical and safety purposes. Parking Lot A includes 772 parking spaces and is being reconfigured as part of the first phase of the campus landscaping plan to be more aesthetically pleasing as well as to complete necessary deferred maintenance. Replacing the sidewalks and curbing complete the package and contribute to the overall safety of students, staff, and visitors to the college.

Motion to approve: George Brown

Second by: Paul Halsey

Motion passed. Date: February 1, 2022

Susan E. Unvarsky
Chair, Audit, Finance, & Facilities Committee

Motion to approve: _____

Second by: _____

Motion passed. Date: February 22, 2022

Daniel C. Rodgers
Board Chair

INFORMATIONAL ITEMS

BANK#	DESCRIPTION	CHECK#	DATE	\$ AMOUNT	VENDOR#	NAME	VOUCHER#	DATE	\$ AMOUNT	DESCRIPTION
71	CURRENT FUND FDD8	33133	1/20/22	\$5,525.59	981	A D P INC	V0467275	1/20/22	\$5,525.59	Payroll Services
71	CURRENT FUND FDD8	32901	12/22/21	\$12,206.49	981	A D P INC	V0466719	12/21/21	\$12,206.49	Payroll Services
71	CURRENT FUND FDD8	33033	1/6/22	\$2,545.00	338163	Academic Impressions	V04666916	1/6/22	\$2,545.00	Online Bootcamp
71	CURRENT FUND FDD8	33096	1/13/22	\$2,996.54	410265	Airgas USA, LLC	V0467134	1/13/22	\$2,931.49	Supplies
71	CURRENT FUND FDD8	33034	1/6/22	\$16,887.00	488312	Amtrust North America	V0466894	1/6/22	\$16,887.00	Workers Comp
71	CURRENT FUND FDD8	33035	1/6/22	\$4,420.00	428961	Audacy Operations, Inc	V0466901	1/6/22	\$4,420.00	Advertising
71	CURRENT FUND FDD8	33100	1/13/22	\$8,700.96	157	Carolina Biological Supply Co	V0467111	1/13/22	\$8,700.96	EPITHELIUM STRATIFIED SQJ 312534
71	CURRENT FUND FDD8	32846	12/16/21	\$114,420.50	463444	CC Training LLC	V0466535	12/16/21	\$3,705.00	CDL Training
71	CURRENT FUND FDD8	32846	12/16/21	\$114,420.50	463444	CC Training LLC	V0466538	12/16/21	\$3,705.00	CDL Training
71	CURRENT FUND FDD8	32846	12/16/21	\$114,420.50	463444	CC Training LLC	V0466534	12/16/21	\$4,275.00	CDL Training
71	CURRENT FUND FDD8	32846	12/16/21	\$114,420.50	463444	CC Training LLC	V0466533	12/16/21	\$7,980.00	CDL Training
71	CURRENT FUND FDD8	32846	12/16/21	\$114,420.50	463444	CC Training LLC	V0466537	12/16/21	\$18,062.00	CDL Training
71	CURRENT FUND FDD8	32846	12/16/21	\$114,420.50	463444	CC Training LLC	V0466532	12/16/21	\$22,577.50	CDL Training
71	CURRENT FUND FDD8	32846	12/16/21	\$114,420.50	463444	CC Training LLC	V0466536	12/16/21	\$27,023.00	CDL Training
71	CURRENT FUND FDD8	32846	12/16/21	\$114,420.50	463444	CC Training LLC	V0466531	12/16/21	\$27,093.00	CDL Training
71	CURRENT FUND FDD8	33140	1/20/22	\$31,608.50	463444	CC Training LLC	V0467267	1/20/22	\$31,608.50	CDL Training
71	CURRENT FUND FDD8	32913	12/22/21	\$36,124.00	463444	CC Training LLC	V0466708	12/21/21	\$36,124.00	CDL Training
71	CURRENT FUND FDD8	32847	12/16/21	\$10,371.49	133	CDW Government Inc	V0466575	12/16/21	\$3,087.72	Poly Studio X30 Video Cnf
71	CURRENT FUND FDD8	32847	12/16/21	\$10,371.49	133	CDW Government Inc	V0466563	12/16/21	\$6,175.44	Poly Studio X30 Video Cnf
71	CURRENT FUND FDD8	32914	12/22/21	\$8,844.05	133	CDW Government Inc	V0466729	12/21/21	\$6,749.54	SUSE LINUX SVR 1-25 1Y
71	CURRENT FUND FDD8	33003	1/4/22	\$12,965.88	133	CDW Government Inc	V0466826	1/4/22	\$11,532.00	Barracuda Email Security
71	CURRENT FUND FDD8	33037	1/6/22	\$8,903.30	774	Century Security Services	V0466898	1/6/22	\$6,016.64	Security Main Campus
71	CURRENT FUND FDD8	32848	12/16/21	\$11,811.67	774	Century Security Services	V0466545	12/16/21	\$6,127.24	Security Main Campus
71	CURRENT FUND FDD8	33104	1/13/22	\$5,139.30	185	Citizens Voice Inc	V0467139	1/13/22	\$3,067.70	Advertising
71	CURRENT FUND FDD8	32850	12/16/21	\$8,750.20	185	Citizens Voice Inc	V0466611	12/16/21	\$3,790.70	Advertising
71	CURRENT FUND FDD8	33143	1/20/22	\$13,742.17	443453	CM Regent, LLC	V0467214	1/20/22	\$2,714.45	Group Disability Insuranc
71	CURRENT FUND FDD8	32851	12/16/21	\$13,732.04	443453	CM Regent, LLC	V0466584	12/16/21	\$2,724.11	Group Disability
71	CURRENT FUND FDD8	32851	12/16/21	\$13,732.04	443453	CM Regent, LLC	V0466585	12/16/21	\$11,007.93	Group Life Insurance
71	CURRENT FUND FDD8	33143	1/20/22	\$13,742.17	443453	CM Regent, LLC	V0467213	1/20/22	\$11,027.72	Group Life Insurance
71	CURRENT FUND FDD8	32783	12/10/21	\$16,549.00	51236	Commonwealth of Pa, Dept of Ed	V0466368	12/10/21	\$16,549.00	Refund
71	CURRENT FUND FDD8	32856	12/16/21	\$4,483.21	1401	E B S O Information Services	V0466600	12/16/21	\$4,224.00	eBook Subscription
71	CURRENT FUND FDD8	33147	1/20/22	\$5,134.60	482392	Eclipse Fleet Service, LLC	V0467280	1/20/22	\$5,134.60	Service
71	CURRENT FUND FDD8	32927	12/22/21	\$7,995.25	474428	Effectv	V0466695	12/21/21	\$3,000.00	Advertising
71	CURRENT FUND FDD8	33149	1/20/22	\$7,976.75	474428	Effectv	V0467296	1/20/22	\$3,000.00	Advertising
71	CURRENT FUND FDD8	33149	1/20/22	\$7,976.75	474428	Effectv	V0467297	1/20/22	\$3,314.75	Advertising
71	CURRENT FUND FDD8	32927	12/22/21	\$7,995.25	474428	Effectv	V0466693	12/21/21	\$3,318.25	Advertising
71	CURRENT FUND FDD8	33108	1/13/22	\$5,943.00	3963318	Entrinsik Inc.	V0467148	1/13/22	\$5,943.00	Inform Annual License
71	CURRENT FUND FDD8	32750	12/9/21	\$8,645.75	4681399	FHEG Luzerne Ctg Comm College	V0466328	12/9/21	\$4,276.73	FA 2021-Pell
71	CURRENT FUND FDD8	32750	12/9/21	\$8,645.75	4681399	FHEG Luzerne Ctg Comm College	V0466327	12/9/21	\$4,369.02	FA 2021-Loan
71	CURRENT FUND FDD8	32806	12/14/21	\$2,782.50	299	Hourigan Kluger & Quinn Pc	V0466455	12/14/21	\$2,782.50	Legal Services
71	CURRENT FUND FDD8	32936	12/22/21	\$30,000.00	486190	IData Incorporated	V0466761	12/22/21	\$30,000.00	Year1 Implementation Svcs TargetX-C
71	CURRENT FUND FDD8	33160	1/20/22	\$3,200.00	488497	k-Fab, Inc	V0467266	1/20/22	\$3,200.00	WEDNET WED-J5299976
71	CURRENT FUND FDD8	33018	1/4/22	\$5,238.00	540	L C C Assn of Higher Eductn	V0466878	1/4/22	\$5,238.00	Faculty Union Dues
71	CURRENT FUND FDD8	33120	1/13/22	\$5,238.00	540	L C C Assn of Higher Eductn	V0467173	1/13/22	\$5,238.00	Faculty union Dues
71	CURRENT FUND FDD8	32869	12/16/21	\$5,325.30	540	L C C Assn of Higher Eductn	V0466581	12/16/21	\$5,325.30	Faculty Union Dues
71	CURRENT FUND FDD8	33116	1/13/22	\$3,641.02	1582	L C C Food Services	V0467122	1/13/22	\$2,985.00	Food Service for 12/8/21
71	CURRENT FUND FDD8	33069	1/11/22	\$3,463.00	543	L C C Foundation	V0466937	1/11/22	\$3,463.00	Return of funds
71	CURRENT FUND FDD8	32870	12/16/21	\$4,029.66	563	Lyrais	V0466601	12/16/21	\$4,029.66	Credo subscription renewal

BANK#	DESCRIPTION	CHECK#	DATE	\$ AMOUNT	VENDOR#	NAME	VOUCHER#	DATE	\$ AMOUNT	DESCRIPTION
71	CURRENT FUND FDDB	32945	12/22/21	\$6,799.00	563	Lyrasis	V0466711	12/21/21	\$6,799.00	Gale
71	CURRENT FUND FDDB	32946	12/22/21	\$8,030.74	424396	MaheDuessel	V0466789	12/22/21	\$8,030.74	Audit Services
71	CURRENT FUND FDDB	32957	12/22/21	\$10,725.00	1625	Nexstar Digital LLC	V0466679	12/21/21	\$3,940.00	Advertising
71	CURRENT FUND FDDB	32957	12/22/21	\$10,725.00	1625	Nexstar Digital LLC	V0466678	12/21/21	\$4,700.00	Advertising
71	CURRENT FUND FDDB	32822	12/14/21	\$5,085.00	312753	Pride Mobility Products Corp	V0466403	12/14/21	\$5,085.00	WEDNET WED-JS299552
71	CURRENT FUND FDDB	32823	12/14/21	\$5,695.00	487591	Production Systems Automation,	V0466405	12/14/21	\$4,000.00	WEDNET WED-JS300398
71	CURRENT FUND FDDB	33186	1/20/22	\$9,445.65	398343	PSBA Insurance Trust Accounts	V0467319	1/20/22	\$9,445.65	Unemployment Claims
71	CURRENT FUND FDDB	32824	12/14/21	\$8,715.00	347297	RCN Telecom Services Inc	V0466395	12/14/21	\$2,700.00	WEDNET WED-JS300089
71	CURRENT FUND FDDB	33080	1/11/22	\$28,961.08	478140	Resolute Underwriting Strategi	V0466951	1/11/22	\$28,961.08	February Premium
71	CURRENT FUND FDDB	33229	1/25/22	\$19,016.80	472955	RPR Wyatt	V0467353	1/25/22	\$19,016.80	HCL Domino Collaboration
71	CURRENT FUND FDDB	33047	1/6/22	\$6,250.00	444571	Sinclair Broadcast Group	V0466904	1/6/22	\$3,125.00	Advertising
71	CURRENT FUND FDDB	33084	1/11/22	\$3,125.00	444571	Sinclair Broadcast Group	V0466952	1/11/22	\$3,125.00	Advertising
71	CURRENT FUND FDDB	33206	1/21/22	\$41,108.26	465	State Employees Retirmt Syst	V0467345	1/21/22	\$6,169.73	Employee Contributions
71	CURRENT FUND FDDB	33086	1/11/22	\$41,332.03	465	State Employees Retirmt Syst	V0466986	1/11/22	\$6,201.67	Employee Contributions
71	CURRENT FUND FDDB	32982	12/22/21	\$49,130.85	465	State Employees Retirmt Syst	V0466770	12/22/21	\$7,373.49	Employee Contributions
71	CURRENT FUND FDDB	33206	1/21/22	\$41,108.26	465	State Employees Retirmt Syst	V0467346	1/21/22	\$34,998.53	Employee Contributions
71	CURRENT FUND FDDB	33086	1/11/22	\$41,332.03	465	State Employees Retirmt Syst	V0466987	1/11/22	\$35,130.36	Employee Contributions
71	CURRENT FUND FDDB	32982	12/22/21	\$49,130.85	465	State Employees Retirmt Syst	V0466771	12/22/21	\$41,757.36	Employee Contributions
71	CURRENT FUND FDDB	33234	1/25/22	\$20,584.04	364398	Stryker Medical	V0467364	1/25/22	\$20,000.00	Life Pak 15 ACLS
71	CURRENT FUND FDDB					Student Refunds			\$6,812.75	REISSUE
71	CURRENT FUND FDDB					Student Refunds			\$17,941.75	Financial Aid
71	CURRENT FUND FDDB					Student Refunds			\$20,433.20	Overpayment
71	CURRENT FUND FDDB	33043	1/6/22	\$2,679.00	4972	The Lamar Companies	V0466905	1/6/22	\$2,679.00	Advertising
71	CURRENT FUND FDDB	32775	12/9/21	\$5,000.00	487804	Thomas G. McConnell Jr	V0466354	12/9/21	\$5,000.00	Arbitral Services
71	CURRENT FUND FDDB	33092	1/11/22	\$3,080.75	375276	Trane Us Inc	V0466978	1/11/22	\$3,080.75	Compressor
71	CURRENT FUND FDDB	32992	12/22/21	\$4,904.63	459205	Viamedia, Inc	V0466735	12/21/21	\$4,904.63	Advertising
71	CURRENT FUND FDDB	33200	1/20/22	\$6,278.31	459205	Viamedia, Inc	V0467268	1/20/22	\$6,278.31	Advertising
71	CURRENT FUND FDDB	33130	1/13/22	\$3,128.52	472834	WasteStrategies, Lc	V0467125	1/13/22	\$3,128.52	CHEMICAL WASTE REMOVAL
75	PLANT FUND FDDB	1023	12/9/21	\$13,342.62	483926	Biomedical Models LLC	V0466326	12/9/21	\$13,342.62	Male Pelvis MS 2
75	PLANT FUND FDDB	1039	1/6/22	\$8,877.71	115	Bognet Inc	V0466913	1/6/22	\$8,877.71	LCCC Shamokin Flooring
75	PLANT FUND FDDB	1031	12/16/21	\$26,865.00	115	Bognet Inc	V0466530	12/16/21	\$26,865.00	Shamokin Flooring
75	PLANT FUND FDDB	1027	12/14/21	\$79,215.70	50570	Brennan Electric Inc	V0466399	12/14/21	\$18,508.00	Switchgear Replacement
75	PLANT FUND FDDB	1027	12/14/21	\$79,215.70	50570	Brennan Electric Inc	V0466400	12/14/21	\$60,707.70	Switchgear Replacement
75	PLANT FUND FDDB	1045	1/13/22	\$10,008.00	133	CDW Government Inc	V0467115	1/13/22	\$10,008.00	KnowBe4 SecurityAwareness Training
75	PLANT FUND FDDB	1028	12/14/21	\$101,852.46	485070	D & M Construction Unlimited,	V0466396	12/14/21	\$28,028.84	Wilkes Barre Center Reno
75	PLANT FUND FDDB	1028	12/14/21	\$101,852.46	485070	D & M Construction Unlimited,	V0466401	12/14/21	\$73,823.62	Wilkes Barre Center Reno
75	PLANT FUND FDDB	1040	1/6/22	\$135,111.98	485070	D & M Construction Unlimited,	V0466912	1/6/22	\$135,111.98	LCCC Wilkes Barre Reno
75	PLANT FUND FDDB	1024	12/9/21	\$15,428.68	983	Fisher Scientific	V0466337	12/9/21	\$3,879.15	LEICA MICROSYSTEMS
75	PLANT FUND FDDB	1024	12/9/21	\$15,428.68	983	Fisher Scientific	V0466336	12/9/21	\$4,584.45	LEICA MICROSYSTEMS
75	PLANT FUND FDDB	1024	12/9/21	\$15,428.68	983	Fisher Scientific	V0466335	12/9/21	\$6,965.08	ISOTEMP 20CUFFT INCLUBTR 3720A
75	PLANT FUND FDDB	1041	1/6/22	\$4,500.00	462798	Greater Pittston Land Rivaliti	V0466891	1/6/22	\$4,500.00	Pittston Center Lease
75	PLANT FUND FDDB	1032	12/16/21	\$19,773.17	2039	Leiro Corporation	V0466550	12/16/21	\$19,773.17	TC410PBB TrICaster TC 410 Plus Base
75	PLANT FUND FDDB	1025	12/9/21	\$21,960.65	594	Phillips Supply Co	V0466317	12/9/21	\$3,270.00	MZM.TT8.TZ24.TH18 TE1, FCW3, LSL2 A
75	PLANT FUND FDDB	1025	12/9/21	\$21,960.65	594	Phillips Supply Co	V0466315	12/9/21	\$8,187.85	MZM.TT8.TZ24.TH18 TE1, FCW3, LSL2 A
75	PLANT FUND FDDB	1025	12/9/21	\$21,960.65	594	Phillips Supply Co	V0466316	12/9/21	\$10,502.80	MZM.TT8.TZ24.TH18 TE1, FCW3, LSL2 A
75	PLANT FUND FDDB	1046	1/13/22	\$6,865.44	486423	PocketNurse	V0467156	1/13/22	\$6,170.61	Dig Pediatric Tray Scale
75	PLANT FUND FDDB	1036	1/4/22	\$3,000.71	487045	Skytron, LLC	V0466837	1/4/22	\$3,000.71	Supplies
75	PLANT FUND FDDB	1042	1/6/22	\$15,468.39	460065	Sobeck Property Management, LL	V0466889	1/6/22	\$15,468.39	FY2022 Hazleton Center

BANK#	DESCRIPTION	CHECK#	DATE	\$ AMOUNT	VENDOR#	NAME	VOUCHER#	DATE	\$ AMOUNT	DESCRIPTION
75	PLANT FUND FDDB	1043	1/6/22	\$24,991.32	447642	Steamtown 300 LLC	V0466890	1/6/22	\$24,991.32	Scranton Center Lease
75	PLANT FUND FDDB	1038	1/4/22	\$10,200.00	475716	Warrior Run School District	V0466840	1/4/22	\$10,200.00	Fall 2021 Credits
76	FEDERAL LOAN FDDB	11496	1/11/22	\$77,142.53	544	L C C Current General Fund	V0467016	1/11/22	\$77,142.53	Books Fall 2021
76	FEDERAL LOAN FDDB					Student Refunds			\$8,434.00	REISSUE
76	FEDERAL LOAN FDDB					Student Refunds			\$36,280.90	Financial Aid
7F	FEDERAL FUNDS FDDB	28139	1/20/22	\$133,366.65	544	L C C Current General Fund	V0467334	1/20/22	\$133,366.65	Books Fall 2021
7F	FEDERAL FUNDS FDDB					Student Refunds			\$8,040.00	REISSUE
7F	FEDERAL FUNDS FDDB					Student Refunds			\$17,860.08	Financial Aid
7H	HEERF Funds	565	12/16/21	\$10,000.00	338163	Academic Impressions	V0466493	12/14/21	\$10,000.00	Membership
7H	HEERF Funds	567	12/16/21	\$33,429.70	115	Bognet Inc	V0466529	12/16/21	\$13,297.32	Hazleton Science Lab
7H	HEERF Funds	567	12/16/21	\$33,429.70	115	Bognet Inc	V0466626	12/16/21	\$20,132.38	Watsontown Lab Reno
7H	HEERF Funds	659	1/20/22	\$4,459.00	477719	Honorlock	V0467262	1/20/22	\$4,459.00	Exam-Automation-
7H	HEERF Funds	569	1/11/22	\$16,003.00	293399	L C C Business Office	V0466935	1/11/22	\$2,676.00	CRRSAA
7H	HEERF Funds	569	1/11/22	\$16,003.00	293399	L C C Business Office	V0466936	1/11/22	\$13,327.00	Institutional CRSAA
7H	HEERF Funds					Student Refunds			\$89,650.00	CRRSAA Funds
7P	PHEAA STATE GRANT FDDB					Student Refunds			\$3,880.00	REISSUE

Vendor Name	Total Payments
570 Concrete, Llc	\$ 468.52
A & R Building Supply	\$ 142.90
A B K Business Forms & Syst In	\$ 905.00
A D E A	\$ 851.00
A D P INC	\$ 17,732.08
A T & T	\$ 129.81
Aaron Burkholder	\$ 175.00
Academic Impressions	\$ 12,545.00
Accreditation Review Council o	\$ 2,000.00
Airgas USA, LLC	\$ 3,718.98
Alaysia A. McDuffie	\$ 50.00
Allegheny Educational Systems	\$ 392.00
Amazon.Com	\$ 5,206.98
Amelia M. Martinez	\$ 420.00
American Assn of Critical Care	\$ 59.00
American Dental Hygienists Ass	\$ 175.00
American Red Cross-Health and	\$ 243.20
Amtrust North America	\$ 16,887.00
Apple Inc	\$ 1,569.00
APR Supply Co	\$ 41.88
Audacy Operations, Inc	\$ 4,420.00
Auto Zone	\$ 266.08
Automotive Equipment Technolog	\$ 624.80
B.W. Wilson Paper Company, Inc	\$ 410.08
Back Mountain Chamber	\$ 600.00
Beach Lake Sprinkler	\$ 561.35
Benco Dental Co.	\$ 2,106.74
BERKHEIMER ASSOCIATES - HAB-DL	\$ 96.81
BGN Development	\$ 1,174.16
Bibliotheca, LLC	\$ 2,097.00
BIDA	\$ 208.97
Biomedical Models LLC	\$ 13,342.62
Biro's Utilities, Inc.	\$ 320.00
Bognet Inc	\$ 69,172.41
Boncal Mark J	\$ 175.00
Borough of Berwick	\$ 1,100.00
Boyer's Food Market	\$ 173.68
BP Business Solutions	\$ 263.79
Brask Mall Services II	\$ 378.14
Brennan Electric Inc	\$ 79,215.70
Broadcast Music Inc	\$ 1,555.32
Brodart Co	\$ 281.47
Builders Supply Company	\$ 155.65
Button Oil Company, Inc	\$ 1,773.03
Cambridge University Press	\$ 1,840.10
Campbell Business Machines	\$ 891.50

Vendor Name	Total Payments
Carolina Biological Supply Co	\$ 10,643.99
CC Training LLC	\$ 182,153.00
CDW Government Inc	\$ 42,189.42
Century Security Services	\$ 25,909.26
CenturyLink	\$ 92.50
Chapter 13	\$ 777.00
Christopher E. Grimes	\$ 175.00
Cintas Fire Protection	\$ 881.20
Citizens Voice Inc	\$ 13,959.50
City Mager Provisions	\$ 123.05
City of Hazleton	\$ 2,113.00
CM Regent, LLC	\$ 27,474.21
Comcast	\$ 1,400.71
Commonwealth of Pa	\$ 22.50
Commonwealth of Pa, Dept of Ed	\$ 16,549.00
Concentra	\$ 140.50
Cook Brothers Truck Parts Co	\$ 73.53
Cooper Electric	\$ 1,553.28
Crest/Good Manufacturing Co	\$ 151.21
Cumulus Media Inc.	\$ 1,750.00
D & M Construction Unlimited,	\$ 236,964.44
D P L Mail Processing	\$ 1,725.00
Dailey Resources Ltd	\$ 56.00
Dempsey Uniform and Linen Supp	\$ 1,293.75
DiaMedical	\$ 768.70
Dr. Danese Brokenshire	\$ 389.76
E B S C O Information Services	\$ 4,483.21
E. J. Long	\$ 117.00
Earl D. Orcutt, Piano Tehchnic	\$ 135.00
Eastern Time Inc	\$ 350.00
Eclipse Fleet Service, LLC	\$ 5,134.60
Edwards Business Systems	\$ 4,963.38
Effectv	\$ 15,972.00
Elevate Oral Care	\$ 294.75
Elizabeth D. Custer	\$ 229.00
Employment Background Investig	\$ 312.95
Entrinsik Inc.	\$ 5,943.00
Ercolani Mark T	\$ 321.44
Evolve Insurance Advisors,LLC	\$ 1,587.50
FEDEX	\$ 40.62
FHEG Luzerne Ctg Comm College	\$ 10,595.28
Fike Services, LLC	\$ 880.16
First Bankcard	\$ 1,733.16
Fisher Scientific	\$ 16,507.68
Fitness Headquarters	\$ 287.50
Galls, Inc , Galls	\$ 134.99

Vendor Name	Total Payments
Geisinger Wyoming Valley	\$ 4,349.24
George J Hayden Inc	\$ 600.00
Gerritys Supermarket	\$ 1,016.11
Global Equipment Company Inc	\$ 144.24
GR Hazleton Chamber of Commerc	\$ 1,270.00
GR Pittston Chamber/Commerce	\$ 725.00
Grainger Inc	\$ 204.61
Greater Pittston Land Rivitali	\$ 4,500.00
Hannah S. Gadowski	\$ 300.00
Harbor Freight	\$ 91.98
Henry Schein Inc	\$ 2,547.96
Home Depot Credit Services	\$ 530.33
Honorlock	\$ 4,459.00
Hourigan Kluger & Quinn Pc	\$ 7,233.00
IData Incorporated	\$ 30,000.00
IEEE Media	\$ 175.00
iHeartMedia	\$ 560.00
Innovative Dental Technologies	\$ 2,210.00
Isabella	\$ 504.19
J C Ehrlich Co Inc	\$ 648.00
Jan-Pro of Northeastern Pa	\$ 1,598.00
JD Screen Printing	\$ 574.00
Jenna N. Fairchild	\$ 50.00
JNK Hydrotest & Extinguisher S	\$ 4,090.00
Jocelyn A. Mendoza	\$ 300.00
John Gaidula	\$ 175.00
John Poko	\$ 175.00
Kayleigh A. Gavlick	\$ 150.00
Key Scientific Products	\$ 368.87
K-Fab, Inc	\$ 3,200.00
Kinber	\$ 3,362.50
Kranson Clothes Inc	\$ 414.00
Kuharchik Construction Inc	\$ 2,200.00
L & R Associates Inc	\$ 64.16
L C C C Assn of Higher Eductn	\$ 15,801.30
L C C C Business Office	\$ 16,003.00
L C C C Current General Fund	\$ 218,614.35
L C C C Food Services	\$ 5,470.21
L C C C Foundation	\$ 7,561.00
Lasting Impressions by WB Trop	\$ 43.50
Lccc	\$ 4,631.00
LCCC Alumni	\$ 125.00
Lccc Bookstore	\$ 497.58
Lccc Foundation	\$ 345.00
LCCC Office of Public Safety T	\$ 45.00
LCCC Petty Cash Sal Shandra	\$ 268.25

Vendor Name	Total Payments
Lerro Corporation	\$ 19,773.17
LM Information Delivery, Inc	\$ 125.20
Lowe's Home Centers Inc	\$ 588.68
Luz College Srvcs Personnel As	\$ 4,169.55
Luzerne County Transportation	\$ 485.20
Lyrasis	\$ 10,828.66
MaherDuessel	\$ 8,030.74
Main Hardware	\$ 21.28
Mainstreet Galleries	\$ 332.92
Marian Catholic High School	\$ 20.00
Marquis Art and Frame	\$ 154.12
Mathematical Assn of America	\$ 175.00
Mayflower Graphics	\$ 63.00
McCarthy Tire Service Co Inc	\$ 183.93
McKesson Medical-Surgical Gove	\$ 943.11
McMaster-Carr Supply Co	\$ 503.46
Mechanical Services Co.	\$ 2,499.00
Medico Construction Equipment	\$ 1,899.56
Midwest Library Service	\$ 1,916.97
Mozip Sign Co	\$ 140.00
Mr. Brian F. Mihneski	\$ 78.40
Mr. Brian J. Kravits	\$ 53.85
Mr. Brian L. Bloom	\$ 65.00
Mr. David E. Falchek	\$ 46.28
Mr. David McSweyn	\$ 2,275.00
Mr. David S. Hontz	\$ 687.97
Mr. Devon J. Buckley	\$ 99.49
Mr. Douglas S. Martin	\$ 888.59
Mr. Jerome Wilk	\$ 78.40
Mr. Joseph S. Maffei	\$ 300.00
Mr. Kevin A. Connors	\$ 325.00
Mr. Marc Malvizzi	\$ 175.00
Mr. Mark A. Choman	\$ 99.00
Mr. Mark A. Kobusky	\$ 149.42
Mr. Patrick J. Farrell	\$ 300.00
Mr. Robert J. Bogdon	\$ 84.00
Mr. Russell P Bigus	\$ 315.71
Mr. Thomas Leary	\$ 1,252.72
Mrs. Natalie L. Staron	\$ 74.14
Mrs. Rachel Coffee	\$ 318.00
Ms. Amanda Shadle	\$ 802.50
Ms. Andrea Pabon	\$ 100.52
Ms. Ashley M. Birster	\$ 800.00
Ms. Barbara B. Montante	\$ 74.00
Ms. Christina Simon	\$ 76.50
Ms. Graceann Platukus	\$ 500.00

Vendor Name	Total Payments
Ms. Ivanna Prodanets	\$ 1,205.45
Ms. Jean M. Greco	\$ 102.26
Ms. Kara M. Furman	\$ 1,205.45
Ms. Kasie L. Weidner	\$ 50.00
Ms. Kelly L. Hopkins	\$ 2,270.94
Ms. Kimberly A. Whalen	\$ 43.86
Ms. Krista M. Youells	\$ 450.00
Ms. Kristen Corcoran	\$ 50.93
Ms. Laura Fowler	\$ 146.23
Ms. Laura Kapalka	\$ 158.87
Ms. Lisa M. Nelson	\$ 2,346.09
Ms. Lora Roebuck	\$ 67.90
Ms. Lori Dunn	\$ 165.00
Ms. Lori J. Laniewski	\$ 116.73
Ms. Lynne A. Pabst	\$ 771.93
Ms. Margaret Reilley	\$ 68.50
Ms. Maria Delucca	\$ 287.84
Ms. Michelle M. Lenhart	\$ 726.56
Ms. Molly A. Sweeney	\$ 211.20
Ms. Nancy A. Dunn	\$ 32.35
Ms. Patricia Yench	\$ 2,075.04
Ms. Rosana Reyes	\$ 281.91
Ms. Susan Spry	\$ 435.38
Ms. Theodora Janosov	\$ 124.95
Mutual Press Clipping Service	\$ 404.00
Mykah S. Onley	\$ 582.00
N E Pa Educ Tv Assn	\$ 833.33
Nasco Healthcare Inc	\$ 2,202.85
National Cinemedia	\$ 262.50
National Fire Protection Assn	\$ 125.00
National Safety Council	\$ 425.00
Nativity B V M High School	\$ 30.00
New Day Films	\$ 75.00
Nexstar Digital LLC	\$ 10,725.00
Northeast Commercial Sharpenin	\$ 37.00
Northeast PA Business Journal	\$ 1,084.00
Northeastern Envelope Co	\$ 808.30
Northumberland County Commissi	\$ 1,620.00
Nova Equipment & Supplies Co	\$ 288.55
O C L C	\$ 944.27
Osap	\$ 150.00
Owen J. Maleski	\$ 366.00
P & J	\$ 1,264.25
PA Commission for Comm College	\$ 504.12
Pa Dept of Labor & Industry-B	\$ 337.89
Pa Paper & Supply Co	\$ 3,706.42

Vendor Name	Total Payments
Paper Direct	\$ 264.55
Penteledata Ltd	\$ 4,500.00
Pepsi Beverages Company	\$ 1,043.25
Pheaa State Grant and Special	\$ 2,283.00
Phillips Supply Co	\$ 25,629.72
Pitney Bowes	\$ 126.00
PocketNurse	\$ 6,865.44
Powells Sales and Service Inc	\$ 707.53
Pramthesh K. Desai, MD	\$ 2,800.00
Prenax Inc	\$ 852.22
Pride Mobility Products Corp	\$ 5,085.00
Production Systems Automation,	\$ 5,695.00
PSBA Insurance Trust Accounts	\$ 9,445.65
Quadient Leasing USA, Inc	\$ 2,992.85
R J Walker Co	\$ 48.67
Raina D. Long	\$ 300.00
RCN Telecom Services Inc	\$ 8,715.00
Rebecca A. Ottensman	\$ 50.00
Rebecca Brominski	\$ 174.44
Regroup	\$ 610.60
Resolute Underwriting Strategi	\$ 28,961.08
Robert Husty	\$ 273.84
RPR Wyatt	\$ 19,016.80
Rymer Auto Specialists	\$ 902.87
S E S A C	\$ 827.73
Sage Publication Inc	\$ 50.00
Sam Son Productions Inc	\$ 500.00
Sam's Club	\$ 2,314.52
Scantron Corp	\$ 552.00
Schaedler Yesco	\$ 5,228.92
Science Interactive Group,LLC	\$ 739.90
Screen Printing U S A	\$ 548.00
Servicemaster Commercial Servi	\$ 4,178.00
Serving Alcohol, Inc	\$ 145.12
Shades Unlimited	\$ 2,300.00
Shadow Technologies, LLC	\$ 131.25
Sharps Compliance, Inc	\$ 130.76
Sherwin Williams Co	\$ 539.70
Sigma Aldrich Inc	\$ 60.46
Sinclair Broadcast Group	\$ 9,375.00
Skytron, LLC	\$ 3,000.71
Sobeck Property Management, LL	\$ 15,468.39
Spiral Binding LLC	\$ 58.27
Standard Speaker	\$ 439.84
Standard/Journal	\$ 165.00
State Employees Retirmnt Syst	\$ 131,571.14

Vendor Name	Total Payments
Steamtown 300 LLC	\$ 24,991.32
Stryker Medical	\$ 23,548.56
Student Refunds	\$ 209,962.43
Switchboard Games	\$ 1,390.00
Sysco Food Services	\$ 4,457.15
Tasty Baking Co	\$ 52.20
Taylor Communications, Inc	\$ 739.75
The Daily Item	\$ 889.00
The Dustbusters Cleaning Team,	\$ 6,385.82
The Lamar Companies	\$ 9,313.00
The News Item	\$ 684.00
The Times Leader	\$ 1,299.00
Thomas G. McConnell Jr	\$ 5,000.00
Times Tribune	\$ 252.05
T-Mobile	\$ 1,728.50
Tobyhanna Army Depot	\$ 567.00
Torbik Safe and Lock	\$ 378.85
Trane Us Inc	\$ 3,080.75
Travers Tool Co Inc	\$ 438.69
Tulpehocken Spring Water	\$ 640.00
U S Food Service	\$ 2,475.09
U.S. Bank Equipment Finance	\$ 4,172.96
United Refrigeration Inc.	\$ 2,321.47
United Way of Wyoming Valley	\$ 298.50
UPS	\$ 490.62
UpToDate, Inc	\$ 1,287.00
Valley Sea Foods Inc	\$ 2,012.31
Verbit Inc.	\$ 911.25
Verizon	\$ 2,310.00
Viamedia, Inc	\$ 11,182.94
Vision Benefits of America	\$ 2,496.86
Wallco Inc	\$ 1,607.36
Warrior Run School District	\$ 10,200.00
Waste Management	\$ 480.60
WasteStrategies, Llc	\$ 3,128.52
Watsontown Area Business Assoc	\$ 45.00
Wegmans Food Markets Inc	\$ 2,415.07
WNEP-TV	\$ 7,500.00
Zeynep Demir	\$ 300.00
Grand Total	\$ 1,994,610.59

TIMES LEADER

February 15, 2022

By Mark Guydish mguydish@timesleader.com

LCCC continues to exceed the national average in nursing license pass rates



NANTICOKE — Luzerne County Community College continues to substantially exceed the national average in pass rates for students taking the National Council Licensure Examination (NCLEX) for Registered Nurses with Associate Degrees in nursing.

According to a media release, LCCC's pass rate in 2021 was 95.12%, compared to the national average of 78.78%. The National Council of State Boards of Nursing, which developed the NCLEX and other nursing exams, ranks LCCC's nursing program in the [top](#) 15% or local programs, based on the percentage of graduates passing the test for 2021.

The college's program is ranked in the [top](#) 10% of associate degree nursing programs, according to the media release, and the [top](#) 13% of all nursing programs, including bachelor degree programs.

"The Luzerne County Community College Nursing program continues to fill the community need for nurses by providing qualified and competent registered nurses during the national nursing shortage and the COVID-19 pandemic," the release said.

LCCC offers a two-year degree approved by the Pennsylvania State Board of Nursing and accredited by the Accreditation Commission for Education in Nursing. The program is provided at the main campus in Nanticoke with both daytime and evening/weekend programs for both traditional students and working Licensed Practical Nurses seeking to become Registered Nurses. The program is also offered days at the college's Northumberland Center.

Tuition for full-time students living in Luzerne County is \$2,835 per semester plus lab fees and textbooks/supplies, though the LCCC Foundation, Inc. awards more than \$100,000 in scholarships for nursing students each year.

"The curriculum is designed to prepare competent associate degree nurses who are eligible to meet licensing requirements for registered nurses and are able to practice nursing in acute care, long-term care, [homes](#), clinics, physician's offices, or other agencies established to meet the [health](#) needs of individuals," the release said.

TIMES LEADER

[Home](#) [Opinion](#) [Columns](#) [Thomas P. Leary: LCCC is Proud to be Part of Downtown Wilkes-](#)

Thomas P. Leary: LCCC is Proud to be Part of Downtown Wilkes-Barre

January 22, 2022



Thomas P. Leary Guest Columnist

The Luzerne County Community College Wilkes-Barre Center opened at 2 Public Square in 1999, but the college has been a part of Wilkes-Barre since its beginning nearly 55 years ago.

The [school](#) welcomed its first students on Oct. 2, 1967, and the original class of 836 students attended classes in two buildings in Downtown Wilkes-Barre located near the Hotel Sterling. The Main Campus Building at 19-21 North River St. housed classrooms, laboratories, library, faculty and administrative offices, and the bookstore. The Student Center at 63 North River St. held the counseling staff, seminar and conference rooms, laboratories, canteen and offices. In addition to the swimming pool at the hotel, students completed [health](#) and physical education classes at the Catholic Youth Center, Jewish Community Center and the YMCA.

Class size nearly doubled the second year and, by the fall of 1968, enrollment totaled 1,500. The first graduation in 1969 was held at Irem Temple on North Franklin Street. The two-building campus was overcrowded and the college expanded to a third building, the Technical Annex on North Main Street in 1971. Quickly outgrowing its headquarters in Wilkes-Barre, LCCC needed a permanent location with sufficient space for expansion, and in 1974 the college moved to a 122-acre campus in Nanticoke. While LCCC at that time was no longer located in Wilkes-Barre, students residing in the city continued to study at the college, and they still do today.

It's a good thing we have a spacious main campus, as we have expanded facilities and programs several times over the years. We acquired additional property in the late 1990s, bringing the Nanticoke campus to 167 acres. At that same time, LCCC began a more concentrated effort to expand coverage with off-campus sites at area high [schools](#) and newly dedicated centers throughout the area in Downtown Wilkes-Barre, Hazleton, Berwick, Shamokin, Pittston and Watsonstown. The LCCC Scranton Center opened in 2016 in The Marketplace at Steamtown.

Enrollment for the fall 2021 semester at the LCCC Wilkes-Barre Center was 329 students in a variety of credit courses. The Downtown Wilkes-Barre location features 10 classrooms, two computer labs, a testing lab, staff offices, and a writing lab. Recent renovations at the center added a new science lab for the spring 2022 semester, providing students the opportunity to begin a career pathway that can lead to a variety of disciplines including science, pre-professional programs, and [health](#) sciences majors.

Offerings in Wilkes-Barre also include criminal justice, paralegal program, anatomy & physiology, microbiology, GED instruction, and both credit and non-credit English as a Second Language classes. The non-credit classes are offered through the College's Adult Learners Training and Assistance (ALTA) program.

All student registration functions can be completed at the Wilkes-Barre Center including application processing, registration, tuition payments, placement testing and academic advising. You can learn more about the LCCC Wilkes-Barre Center at 570-740-0780 or email at wbcen@luzerne.edu.

The college is proud of the Wilkes-Barre Center and pleased to be part of the city's downtown. As the region's community college serving Luzerne and surrounding counties, we have more than 32,000 degree-bearing alumni.

Overall, the college currently offers 82 occupational programs (including degree, certificate and diploma programs), 24 liberal arts/transfer programs, and 10 credit-free programs as well as hundreds of conferences, seminars, workshops, and business/industry customized training.

Whether it's at our Downtown Wilkes-Barre Center, our main campus, or any of our other locations, LCCC's mission continues to be providing affordable and accessible educational opportunities for students. Our low tuition rate is just \$134 per credit for Luzerne County residents.

In my [travels](#) to our various centers, it's gratifying to [see](#) our faculty, staff and students being part of the cities and communities we serve. A strong Downtown Wilkes-Barre is good for everyone in Luzerne County, and we strongly support the Downtown Rebound.

Thomas Leary is President of Luzerne County Community College.

TIMES LEADER

COVID-19 surge sends ripples through area education

January 10, 2022

By Mark Guydish mguydish@timesleader.com

The surge of COVID-19 cases throughout Luzerne County is causing multiple and evolving changes in plans for area [schools](#) at all levels.

The number of daily new cases reported for the county has skyrocketed, topping 800 on Friday and Saturday and setting a new one-day record Sunday, with 989 new cases reported. The surge is reflected in the state's data for those ages 0 to 18, released once a week. Last week the state reported 724 new cases in Luzerne county for that age group, more than double the 303 reported one week earlier.

Here are some of the responses by area education institutions.

Luzerne County Community College delayed the start of the spring semester "based on the increase in the positivity rate and the number of cases of COVID-19 in the region," according to a media release. The start of spring semester was moved from Jan. 18 to Jan. 31. Classes at the Wilkes-Barre Center and Late Start Sections are delayed from Jan. 31 to Feb. 14. Spring break has been eliminated, and the spring semester will now end May 20.

King's College also delayed the start of the the Spring Semester, announcing late last week that classes will begin Jan. 24

Wilkes University President Greg Cant sent out a notice that the spring semester would temporarily shift to an online format. "All classes slated to begin on Tuesday, Jan. 18 will do so remotely." The plan is to transition back to face-to-face classes Jan. 31. "Moving back to

residence halls will be [flexible](#)," Cant wrote, with the halls open on Jan. 16. But "You will be required to register for a move-in time that includes a return COVID-19 test."

While students will have the option "to remain at [home](#) during the nine days of remote instruction," residential students will still be charged for room and board during the stretch of virtual instruction. And the University is requiring students and employees to be tested before returning to campus regardless of vaccination status. PCR nasal tests, saliva tests or antigen/rapid tests are all acceptable.

Masks continue to be required in all indoor campus locations regardless of vaccination. "With the transmissibility of the Omicron variant, it is strongly recommended that you [wear](#) a KN95 or disposable surgical [face mask](#) in lieu of cloth masks. If you must [wear](#) a cloth mask, you should layer several masks for the best protection. Neck gaiters do not provide the necessary level of protection and should not be used."

Greater Nanticoke Area School District Superintendent Ron Grevera announced Saturday evening that the district will go full-virtual this week "due to COVID and staffing concerns. Students will follow their schedules by logging into Google classroom attending classes and competing assignments." The district plans to resume in-person classes Jan. 18, following the Martin Luther King Jr. holiday.

Hanover Area School District announced last week that it would give students the option of switching to remote live learning for the month of January, and Superintendent Nathan Barrett held a community meeting Sunday night via Zoom to go over the details.

Barrett began by giving the number of new cases in the last two weeks for each [school](#), with three of the four elementary buildings reporting fewer than 10, Hanover Green having 10 and the high [school](#) reporting 55. The state requires a [school](#) close if 5% of the [school](#) population tests positive in 14 days or 10% test positive in 30 days, he said, but stressed it is a school-level requirement, so one [school](#) may close while another remains open.

The district also began mandating testing of athletes, regular testing of unvaccinated staff once per week, and continues to require masks and desk shields. The district has rapid antigen tests available on demand for students. And the district has begun providing a "positive case submission form" for parents to submit if the family has a positive test the district should know about.

Regarding the online option, Barrett said attendance will be taken for every period, and that lunches will be distributed every Wednesday from 11 a.m. to noon at Memorial Elementary

and the high [school](#) for those who switch to virtual learning. The district is requiring a student who goes online to stay online until the end of January. While the district will allow in-person students to switch to the online format if they are required to quarantine, students will not be able to switch from online back to in-person until the end of the month.

Barrett noted the district had gone to full remote learning for all [schools](#) the first week of January because positive cases in all [schools](#) were “through the roof,” and he felt uncomfortable bringing all students in [schools](#) until more testing could be made available. He said additional testing helped discover 30 cases.

Wyoming Area School District had announced before Christmas break that all classes would be virtual from Jan. 3 through Jan. 17. The plan is to return to in-person lessons Jan. 18. At the time, Superintendent Janet Serino said the move was made out of concern that family gatherings over the holidays would lead to an increase of infections, a concern that has turned out to be accurate.

In-person learning returns; face mask debate heats up

A return to more normal operations arrived with new school year.

BY MICHAEL P. BUFFER
STAFF WRITER

Because of the ongoing COVID-19 pandemic, most elementary and secondary schools in the area were only providing virtual instruction when 2020 ended.

School officials began 2021 trying to figure out when and how to begin in-person learning. Many transitioned to hybrid plans with some students attending school for in-person learning two days a week and continuing with online learning other days.

Wilkes University, Luzerne County Community College and King's College pushed back the first day of spring semester classes to Feb. 1. Misericordia University began the start of spring semester classes on Jan. 25.

Teachers and school staff in the region began receiving COVID-19 vaccinations in March, and schools started returning to in-person learning five days a week.

Proms and graduation ceremonies returned as the school year ended in June, though masks were required. School districts over the summer used federal coronavirus funding for summer programs to help students recover from learning loss due to reduced in-person learning time.

On June 28, Pennsylvania lifted the statewide order requiring universal masking

in public. State officials still encouraged anyone not fully vaccinated to continue wearing a mask in public, and the state Department of Education planned to let local districts determine their own mask policies for the upcoming school year.

Please see SCHOOL, Page A6

Some districts were planning optional masking. Some were going to require masks only in elementary school buildings because children under 12 were not eligible to receive vaccinations until November.

On July 26, the state departments of health and education said schools should follow the federal guidance that unvaccinated students and staff wear masks indoors for the start of the school year.

The next day, the U.S. Centers for Disease Control and Prevention changed its mask recommendation in response to rising COVID-19 transmission due to the Delta coronavirus variant. The new recommendation was everyone should wear masks indoors, regardless of vaccination status, in areas with substantial or high transmission rates and everyone should wear masks inside schools regardless of transmission rates.

The mask debate began to get more contentious and divisive. On Aug 31, Gov. Tom Wolf announced the state Department of Health was imposing, starting Sept. 7, a statewide mask mandate in all kindergarten-to-12th-

grade public and private schools.

Area schools complied with the state mask mandate, and that angered the critics. But in-person learning five-days-a-week was back to being the norm in the area.

For the fall semester, King's, Wilkes and Misericordia asked students and staff to report their vaccination status and told them they will get tested throughout the semester if they do not show proof of vaccination. Those institutions, along with Luzerne County Community College, imposed mask requirements for the fall semester.

On Dec. 10, the state Supreme Court ended the state mask mandate for elementary and secondary schools by upholding a lower-court decision that it was imposed without legal authorization. The Lake-Lehman and Northwest Area school districts quickly responded by ending mask requirements Dec. 13.

On Dec. 15, Lake-Lehman agreed to a recommendation from the state Department of Health to only provide online instruction and suspend sports for the rest of December at the junior/senior high school in response to a rapid rise in COVID-19 cases.

On Dec. 16, the Crestwood School Board voted 4-3 Thursday, with two members absent, for a new policy that allows students and staff to be unmasked inside schools.

Students continued to wear masks on buses, which



is a federal mandate, and other districts in Luzerne County and Diocese of Scranton Catholic schools continued their mask mandates.

Mask proponents said wearing masks results in fewer students and employees ending up in quarantine from close-contact exposure to COVID-19. School districts conduct contact tracing to identify students who come in close contact with others who tested positive for COVID-19.

Fully vaccinated people also don't have to quarantine if they come into close contact with the virus but should get tested three to five days after their last known exposure, according to the CDC.

In October, Hanover Area had to cancel a high school football game at Wyoming Area because too many unvaccinated Hanover Area players were in quarantine,

Superintendent Nathan Barrett said. Because the "entire football team was considered a close contact" and only six were vaccinated, 23 had to quarantine, Barrett said.

Wyoming Area is going back to virtual schooling when students return from the winter holiday break on Jan. 3, and the district plans to resume in-person learning

Jan. 17. The move was not the result of more cases, but officials were about rising COVID-19 transmission from the omicron coronavirus variant and potential spread from holiday gatherings.

Contact the writer:
mbuffer@citizensvoice.com
570-821-2073, @cvmikebuffer



THE CITIZENS' VOICE FILE

Dallas School District students wear masks as they arrive for school in August.

LCCC Foundation drive provides Thanksgiving baskets to students



The Luzerne County Community College Foundation Inc. held a collection drive to provide Thanksgiving meal baskets to LCCC students and families as part of the fifth anniversary celebration of the Peter J. Lello Food Bank. The "Adopt a Trailblazer Family for Thanksgiving" collection provided meals for 43 students and their families through the support of the LCCC Board of Trustees, LCCC Foundation Board of Directors, LCCC Alumni Board of Directors, LCCC faculty and staff, and members of the Askam United Methodist Church. With some of the donated items at the Askam United Methodist Church, from left, are JoAnne Yugas, Wilkes-Barre, assistant

director, institutional advancement, LCCC; Audrey Wysowski, Plymouth, member, Askam United Methodist Church; Miranda Detweiler, Hanover Twp., member, Askam United Methodist Church; Elaine Lasecki, Hanover Twp., member, Askam United Methodist Church; Pastor Craig Mark, Dallas, Askam United Methodist Church; Lorl Earley, Hanover Twp., marketing office assistant, LCCC and member, Askam United Methodist Church; Ann Marie Schraeder, Glen Lyon, assistant to the executive director, institutional advancement, LCCC; and Rebecca Brominski, Mountain Top, executive director, institutional advancement, LCCC.





Bill O'Boyle

Beyond the Byline

Santa's special Christmas list

WILKES-BARRE — It's Christmas Eve and with any luck, Santa will arrive, take the coronavirus away and leave everything on everybody's list — that is, everybody who was good, not naughty.

But just in case, here are a few gifts Santa might have left, or should have:

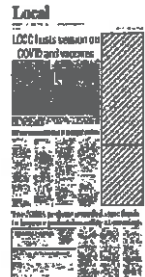
- **Wilkes-Barre Mayor George Brown** — A balanced budget, Farmers Market, Fine Arts Fiesta, Downtown development; downtown workers return, shows at the F.M. Kirby Center — you get it, right?
- **Luzerne County Manager Romilda Crocarno** — A World Series appearance for the Yankees.
- **Will Beekman** — To book Carole King at the Mohegan Sun Arena at Casey Plaza — this is an annual wish that actually might have been on my list.
- **Drew Taylor, F.M. Kirby Center:** Pandemic-be-gone so more name acts can be booked.
- **Wilkes-Barre Township** — Continued development that brings more business and people to the township.
- **Wilkes U. President Greg Cant** — For the Wilkes community to embrace a culture of innovation and creativity and to be all it can be in the post-pandemic days ahead.
- **Luzerne County Community College President Tom Leary** — To continue to offer the students more quality programs at an affordable cost and to expand opportunities for high school students to expand partnerships with regional business and industry for student learning internships and to provide a safe and secure learning environment for the personal and intellectual growth of those we serve in a changing world.
- **King's College President Thomas Looney** — To bring new life to additional buildings in the downtown area in the coming months and years and to

be true to the college's original mission of educating the people of our region who desire access to quality higher education and to strengthen the entire campus community.

- **All veterans** — To continue getting the utmost respect and admiration from a grateful nation.
- **Luzerne County Council** — To work together for the betterment of the county and its hard-working people.
- **Wilkes-Barre City Council** — To effect positive change for the city and its residents and visitors.
- **Chamber President Lindsay Griffin** — To convince major employers that pay family-sustaining wages to locate in NEPA.
- **Diamond City Executive Director Larry Newman** — For downtown workers to return to their offices and for downtown businesses to benefit and more to open.
- **Downtown Wilkes-Barre Business Association Chairman John Maday** — Increased membership in the Downtown Wilkes-Barre Business Association, his own Viking boat, and an invite to lunch with him, the Easter Bunny and Santa Claus.
- **Wilkes-Barre/Scranton International Airport:** A return of direct flights to Florida.
- **Lou Barletta** — A World Championship for the Yankees, a good cigar and more time with family and faithful companion Riley.

See LIST | 3A

- **Republican Party** — To be willing to work “across the aisle” and to at least consider the concept of compromise.
- **Democratic Party** — Ditto.
- **U.S. Rep. Matt Cartwright, D-Moosic** — To bring large amounts of federal dollars to Northeastern Pennsylvania through his position as Chairman of the House Appropriations Committee.
- **U.S. Rep. Dan Meuser, R-Dallas** — To make a positive impact in Washington D.C. to secure funding for NEPA.
- **U.S. Sen. Bob Casey, D-Pa.** — To use his Senate seniority to guide the

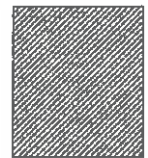




Presidential Profiles

Sunday, December 26, 2021

TIMES LEADER MEDIA GROUP



Tom Leary, Luzerne County Community College President

By Bill O'Boyle
boboyle@timesleader.com

WILKES-BARRE — Tom Leary said a funny thing happened to him on his way to law school — he fell in love with Luzerne County Community College.

LCCC President Leary, 70, began his career at the school more than 40 years ago, serving as assistant director of admissions — and never left.

A lifelong educator, Leary has served in several senior leadership positions including vice president of student development for approximately nine years. In February 2008, he was inaugurated as the sixth president of Luzerne County Community College. He also serves as an adjunct professor of History and Political Science.

“One of the greatest accomplishments within the past year is one I share with all members of the college community, including faculty, staff, and members of the Board of Trustees, Foundation Board of Directors, and Alumni Board, which was meeting the continued challenges of the pandemic,” said Leary. “The most important part of our mission statement is ‘fostering student success’ brought about many challenges not only with the delivery of instruction and services, but also with recruiting, student activities, facilities maintenance, and caring not only for the academic needs of our students, as always, but also meeting their emotional and even economic needs brought about by the pandemic.

“I feel that we met the challenge and will continue to focus on this priority.”

Additionally, Leary said this can not be emphasized enough, LCCC received results on June 24 from its Middle States visit and review.

“I’m pleased to report the Middle States Commission on Higher Education (MSCHE) has reaffirmed accreditation for LCCC,” Leary said.

The results of the LCCC visit and review are posted to the Middle States Association’s website at — <https://www.msche.org/about-us/contact-us/>.

“I’m appreciative of the efforts of our faculty, staff, students, Board of Trustees, and members of the Middle States core team which

resulted in our compliance with Middle States Standards,” Leary said. “All aspects of the college, including educational effectiveness, planning, access, fiscal management, and programs that support student success, were recognized and commended by the MSCHE Evaluation Team.”

Leary said the accrediting body has confirmed that LCCC is meeting its mission to provide excellence in education, foster student success in achievement of goals, and positively impact Luzerne County and the surrounding Northeastern Pennsylvania region.

Leary said there are other challenges facing LCCC students, and/or community:

- Continued funding support for programs and services.
- Increased financial support for students.

“We need to work to increase capital funding for community colleges for updated equipment and technology,” Leary said. “This is needed both for existing programs as well as to establish new academic programs.”

Leary said LCCC recently received a grant from the PA Department of Education to establish an eSports academic program and a learning lab which will enable students to participate in competitions. The grant will fund equipment and personnel costs.

Leary said specific capital funding also is needed to expand offerings at LCCC’s centers. Examples include equipment for programs such as Welding, Electrical Construction, Communication Arts, and Computerized Numerical Control (CNC).

Leary said LCCC has been successful with its fundraising efforts to increase scholarship donations and the school needs to continue on this path to assist more students.

“We have also been successful with EITC (Educational Improvement Tax Credit) contributions, which are designed to enhance educational programs and opportunities for students,” Leary said. “The college received more than \$335,000 in EITC funds this year, which will be used to support the college’s summer camps, Early College Program, and College Ready Math Program.”

Leary added that LCCC needs to continue to work with the Pennsylvania Commission for

Community College to advocate for increased state PHEAA Grants and federal PELL Grants.

LCCC plans for 2022:

- Continue to expand opportunities for high school students to enroll in the LCCC Early College Program.
- Expand partnerships with regional business and industry for student learning internships.
- Provide a safe and secure learning environment for the personal and intellectual growth of those we serve in a changing world.
- Provide relevant, meaningful educational services; flexible and willing to change.
- Deliver a curriculum and services which are inclusive of global considerations and which value the voices, experiences, and worth of a variety of cultural perspectives.

About President Leary

Family: son, Patrick.

Hobbies: Exercising, reading, traveling, following several sports teams.

Education: Received a Bachelor's Degree from King's College, Master's Degree from University of Scranton, and worked on post-graduate studies in a Doctoral program at Temple University.

Reach Bill O'Boyle at 570-991-6118 or on Twitter @TLBillOBoyle.



Name: Tom Leary

Title: President at Luzerne County Community College

Quote: "The most important part of our mission statement is 'fostering student success' brought about many challenges not only with the delivery of instruction and services, but also

with recruiting, student activities, facilities maintenance, and caring not only for the academic needs of our students, as always, but also meeting their emotional and even economic needs brought about by the pandemic. I feel that we met the challenge and will continue to focus on this priority.”



Luzerne County Community College President Thomas Leary. Times Leader | File Photo



President of Luzerne County Community College Thomas Leary in his office on the college campus in Nanticoke. Times Leader | File Photo



Luzerne County Community College President Thomas P. Leary.

Times Leader | File Photo



Listen to this

A

A

A

Tired of ads? Subscribers enjoy a distraction-free reading experience.

[Click here to subscribe today](#) or [Login](#).

Students in the evening/weekend nursing program from the Mary Gill Carrozza, R.N. School of Nursing and Health Sciences at the Francis S. and Mary Gill Carrozza, R.N. Health Sciences Center at Luzerne County Community College were honored at a graduation ceremony held recently at the College's Educational Conference Center. Shown are, from left, first row: Tiff Snyder, Bloomsburg; Ashley Mizak, Mildred; Rachael Flagg, Bloomsburg; Jessica Van Orden, Luzerne; Megan Olszar, Covington Township. Second row: Melanie Bowling, Danville; Sarah Lamoreaux, Bloomsburg; Misty Casterline, Larksville; Jessica Quinn, Hazleton; Amanda Clark, Falls; and Kaleigh Bubble, Wilkes-Barre.

LCCC inks dual admission deal with Misericordia University

December 22, 2021

By Mark Guydish mguydish@timesleader.com



Luzerne County Community College President Thomas Leary and Misericordia University President Daniel Myers signed documents strengthening the dual admissions agreements between the two schools at the start of Tuesday's LCCC board of trustees meeting

Mark Guydish | Times Leader



Listen to this

A

A

A

Tired of ads? Subscribers enjoy a distraction-free reading experience.

[Click here to subscribe today](#) or [Login](#).

NANTICOKE – Luzerne County Community College signed an agreement with Misericordia University at the start of Tuesday's Board of Directors meeting that will

improve the ability of students to transfer between the [schools](#) and double the money available to help LCCC students finishing their degrees at Misericordia.

The Board also voted to increase the minimum starting pay for classified staff, impacting primarily custodians, maintenance workers and secretaries. The rate can vary for different positions, but the lowest starting salary was \$9.15 per hour and was raised to \$15 per hour. Staff earning more than \$15 per hour will get a pay equity adjustment of \$800 to their base wage. The changes impact 95 full-time employees and 15 part-time employees at a total annual salary increase of \$163,466 and a total flat bonus of \$62,520.

LCCC President Thomas Leary said the [school](#) has had a strong relationship with Misericordia for years, having worked out various deals to make it easier for students in some fields to transfer from the community college to the university, but that the new agreement enhances such transfers.

Misericordia President Daniel Myers said the deal means transferring students “are not going to lose time and not going to lose credits.”

The board also learned that a recently completed audit found no problems with LCCC finances, despite a decline of several million dollars in student-generated revenue from last years. The loss resulted from widespread uncertainty and enrollment declines in most colleges and universities after the COVID-19 pandemic hit the state in March, 2020.

The college has been eligible for a total of nearly \$22 million in federal pandemic [relief](#) funds and has spent about \$7 million. It has two years draw down on the remaining money and spend it.

And the [school](#) continues to do well in fundraising despite the pandemic. LCCC Foundation Executive Director Rebecca Brominski reported donors contributed over half a million, with \$341,000 coming through the Education Improvement Tax Credit program that gives businesses tax breaks for money donated to eligible education foundations.

The board also:

- Approved the purchase of current model Ford Escape hybrid electric car for the Automotive Department from Whitmoyer Ford, Inc., at a cost of \$32,400. Most of the cost is covered by federal grant money. The purchase is designed to help the program keep students current on [repairs](#) and maintenance of hybrid and electric vehicles.
- Approved the purchase of \$55,543 in eSports Arena Equipment. Gaming computers and [accessories](#) will be bought from IntegraONE, while audio/video [equipment](#) is coming from B&H Photo and Amazon. CDW Government is providing [furniture](#) and miscellaneous equipment.
- Approved a response to a Request For Proposals for online/virtual tutoring service, awarded to Brainfuse at \$23 per hour. The college has not been able to keep up with demand for online tutoring, and the service is expected to help alleviate the shortage of staff and time.
- Awarded a 3-year property and liability insurance contract to Joseph J. Joyce Associates, Inc., at a cost of \$198,985 per year.
- Awarded a 3-year worker's compensation insurance contract to Joyce Associates at a cost of \$62,942 per year. That should result in a savings of \$111,000 over the three years compared to the current contract.
- Approved change orders for [work](#) at the Greater Susquehanna Center Science lab at a cost of \$10,434 and [work](#) at the Hazleton Center Science Lab at a cost of \$7,174. Bognet Inc. is doing the work.

Reach Mark Guydish at 570-991-6112 or on Twitter @TLMarkGuydish

Mark Guydish

Mark Guydish is the seventh of nine children born in West Hazleton. He earned his degree at Penn State, ran a bike shop, bicycled across the country, and worked as a paid EMT before joining